

SNAI1 antibody [AT2D5]

Cat. No. GTX57596

Host	Mouse
Clonality	Monoclonal
Isotype	IgG2b
Applications	WB
Reactivity	Human

Package
100 µl

Applications

Application Note

*Optimal dilutions/concentrations should be determined by the researcher.

Suggested dilution	Recommended dilution
WB	Recommended starting dilution is 1:1000.

Not tested in other applications.

Calculated MW 29 kDa. ([Note](#))

Properties

Form	Liquid
Buffer	PBS, 10% Glycerol
Preservative	0.02% Sodium azide
Storage	Store as concentrated solution. Centrifuge briefly prior to opening vial. For short-term storage (1-2 weeks), store at 4°C. For long-term storage, aliquot and store at -20°C or below. Avoid multiple freeze-thaw cycles.
Concentration	1 mg/ml (Please refer to the vial label for the specific concentration.)
Immunogen	The clone AT2D5 is derived from hybridization of mouse F0 myeloma cells with spleen cells from BALB/c mice immunized with a recombinant human SNAI3 protein.
Purification	Protein A Purified
Conjugation	Unconjugated

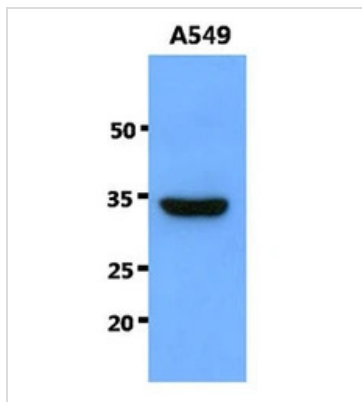
Note For laboratory research use only. Not for any clinical, therapeutic, or diagnostic use in humans or animals. Not for animal or human consumption.

Purchasers shall not, and agree not to enable third parties to, analyze, copy, reverse engineer or otherwise attempt to determine the structure or sequence of the product.



For full product information, images and publications, please visit our [website](#).

DATA IMAGES

**GTX57596 WB Image**

WB analysis of A549 whole cell lysate using GTX57596 SNAI1 antibody.

Loading : 40 μ g

Dilution : 1:1000



For full product information, images and publications, please visit our [website](#).