

14-3-3 gamma antibody [AT4B9]

Cat. No. GTX57599

Host	Mouse
Clonality	Monoclonal
Isotype	IgG1
Application	WB, ICC/IF
Reactivity	Human, Mouse

Package
100 µl

APPLICATION

Application Note

*Optimal dilutions/concentrations should be determined by the researcher.

Suggested dilution	Recommended dilution
WB	Recommended starting dilution is 1:1000.
ICC/IF	Assay dependent

Not tested in other applications.

Calculated MW 28 kDa. ([Note](#))**Product Note** Based on internal testing result, this antibody does not cross react with human YWHAZ, human YWHAB, human YWHA E, human YWHAH, human SFN, and human YWHAQ.

PROPERTIES

Form	Liquid
Buffer	PBS, 10% Glycerol
Preservative	0.02% Sodium azide
Storage	Store as concentrated solution. Centrifuge briefly prior to opening vial. For short-term storage (1-2 weeks), store at 4°C. For long-term storage, aliquot and store at -20°C or below. Avoid multiple freeze-thaw cycles.
Concentration	1 mg/ml (Please refer to the vial label for the specific concentration.)
Immunogen	The clone AT4B9 is derived from hybridization of mouse F0 myeloma cells with spleen cells from BALB/c mice immunized with a recombinant human 14-3-5 gamma protein.
Purification	Protein A Purified
Conjugation	Unconjugated

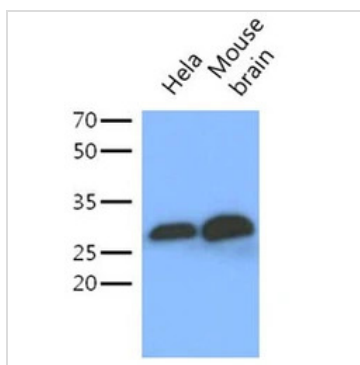


For full product information, images and publications, please visit our [website](#).

For laboratory research use only. Not for any clinical, therapeutic, or diagnostic use in humans or animals. Not for animal or human consumption.

Note

Purchasers shall not, and agree not to enable third parties to, analyze, copy, reverse engineer or otherwise attempt to determine the structure or sequence of the product.

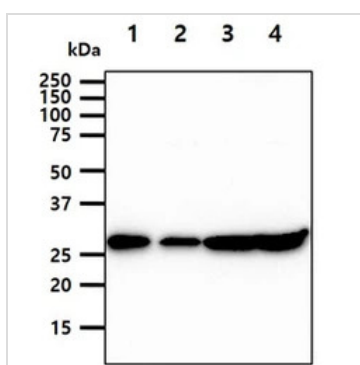
DATA IMAGES

GTX57599 WB Image

WB analysis of various samples using GTX57599 14-3-3 gamma antibody.

Samples : HeLa whole whole cell lysate and Mouse brain tissue lysate

Loading : 40 µg

Dilution : 1:1000


GTX57599 WB Image

WB analysis of various samples using GTX57599 14-3-3 gamma antibody.

Lane 1 : 293T whole cell lysate

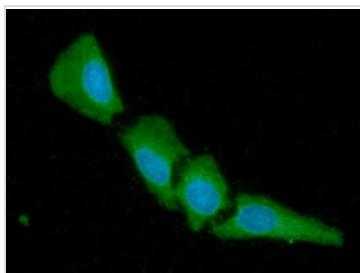
Lane 2 : A431 whole cell lysate

Lane 3 : K562 whole cell lysate

Lane 4 : NIH-3T3 whole cell lysate

Loading : 40 µg

Dilution : 1:1000


GTX57599 ICC/IF Image

ICC/IF analysis of HeLa cells using GTX57599 14-3-3 gamma antibody.

Blue: DAPI

Green: Primary antibody

Dilution: 1:100



For full product information, images and publications, please visit our [website](https://www.genetex.com).