

## Nucleophosmin antibody [AT23F1]

Cat. No. GTX57613

<b>Host</b>	Mouse
<b>Clonality</b>	Monoclonal
<b>Isotype</b>	IgG1
<b>Applications</b>	WB, ICC/IF, FCM
<b>Reactivity</b>	Human

Package  
100 µl

## Applications

## Application Note

\*Optimal dilutions/concentrations should be determined by the researcher.

Suggested dilution	Recommended dilution
WB	1:1000
ICC/IF	1:200
FCM	1:200

Not tested in other applications.

**Calculated MW** 33 kDa. ( [Note](#) )

## Properties

<b>Form</b>	Liquid
<b>Buffer</b>	PBS, 10% Glycerol
<b>Preservative</b>	0.02% Sodium azide
<b>Storage</b>	Store as concentrated solution. Centrifuge briefly prior to opening vial. For short-term storage (1-2 weeks), store at 4°C. For long-term storage, aliquot and store at -20°C or below. Avoid multiple freeze-thaw cycles.
<b>Concentration</b>	1 mg/ml (Please refer to the vial label for the specific concentration.)
<b>Immunogen</b>	The clone AT23F1 is derived from hybridization of mouse F0 myeloma cells with spleen cells from BALB/c mice immunized with a recombinant human NPM3 protein.
<b>Purification</b>	Protein A Purified
<b>Conjugation</b>	Unconjugated

## Note

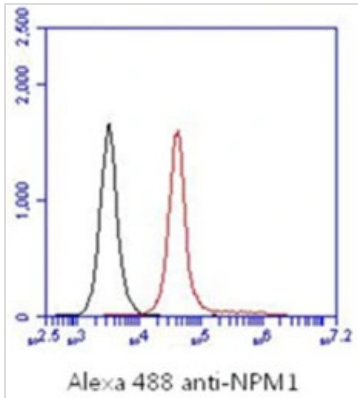
For laboratory research use only. Not for any clinical, therapeutic, or diagnostic use in humans or animals. Not for animal or human consumption.

Purchasers shall not, and agree not to enable third parties to, analyze, copy, reverse engineer or otherwise attempt to determine the structure or sequence of the product.



For full product information, images and publications, please visit our [website](#).

## DATA IMAGES



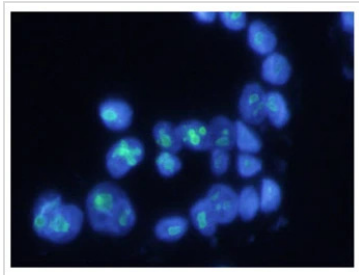
### GTX57613 FCM Image

FACS analysis of WiDr cells using GTX57613 Nucleophosmin antibody.

Cell Number:  $1 \times 10^6$  cells

Primary antibody: Red line

Antibody amount: 2-5  $\mu$ g



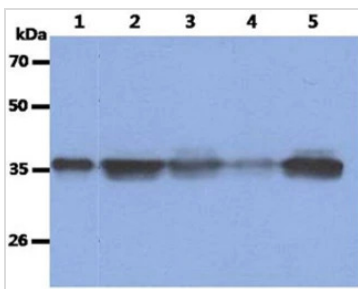
### GTX57613 ICC/IF Image

ICC/IF analysis of WiDr cells using GTX57613 Nucleophosmin antibody.

Blue: DAPI

Green: Primary antibody

Dilution: 1:200



### GTX57613 WB Image

WB analysis of various samples using GTX57613 Nucleophosmin antibody.

Lane 1 : Recombinant Human NPM1 protein (50 ng)

Lane 2 : Jurkat whole cell lysate (40  $\mu$ g)

Lane 3 : 293T whole cell lysate (40  $\mu$ g)

Lane 4 : HeLa whole cell lysate (40  $\mu$ g)

Lane 5 : HepG2 whole cell lysate (40  $\mu$ g)



For full product information, images and publications, please visit our [website](https://www.genetex.com).