

Beclin 1 antibody [AT45E8]

Cat. No. GTX57617

Host	Mouse
Clonality	Monoclonal
Isotype	IgG2b
Application	WB, ICC/IF, FACS
Reactivity	Human, Mouse

Package
100 µl

APPLICATION

Application Note

*Optimal dilutions/concentrations should be determined by the researcher.

Suggested dilution	Recommended dilution
WB	Assay dependent
ICC/IF	Assay dependent
FACS	Assay dependent

Not tested in other applications.

Calculated MW 52 kDa. ([Note](#))

PROPERTIES

Form	Liquid
Buffer	PBS, 10% Glycerol
Preservative	0.02% Sodium azide
Storage	Store as concentrated solution. Centrifuge briefly prior to opening vial. For short-term storage (1-2 weeks), store at 4°C. For long-term storage, aliquot and store at -20°C or below. Avoid multiple freeze-thaw cycles.
Concentration	1 mg/ml (Please refer to the vial label for the specific concentration.)
Immunogen	The clone AT45E8 is derived from hybridization of mouse F0 myeloma cells with spleen cells from BALB/c mice immunized with a recombinant human BECN3 protein.
Purification	Protein A Purified
Conjugation	Unconjugated

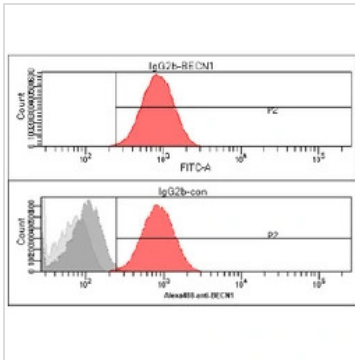
Note

For laboratory research use only. Not for any clinical, therapeutic, or diagnostic use in humans or animals. Not for animal or human consumption.

Purchasers shall not, and agree not to enable third parties to, analyze, copy, reverse engineer or otherwise attempt to determine the structure or sequence of the product.



For full product information, images and publications, please visit our [website](#).

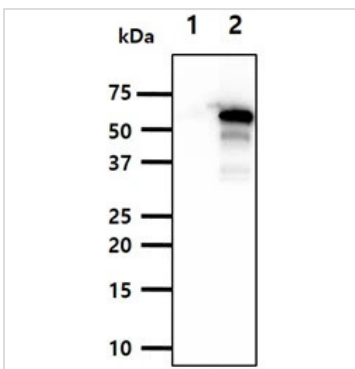
DATA IMAGES

GTX57617 FACS Image

FACS analysis of HeLa cells using GTX57617 Beclin 1 antibody.

Cell Number: 1×10^6 cells

Red: Primary antibody

Antibody amount: 2-5 μ g


GTX57617 WB Image

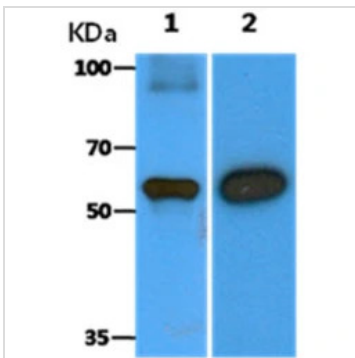
WB analysis of various samples using GTX57617 Beclin 1 antibody.

Lane 1 : 293T cell lysate

Lane 2 : BECN1 transfected 293T cell lysate

Loading : 10 μ g

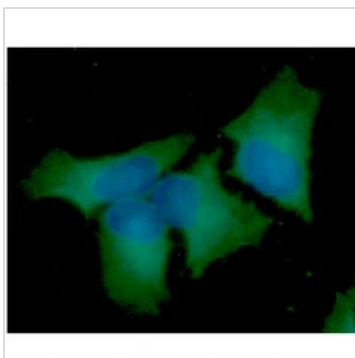
Dilution : 1:1000


GTX57617 WB Image

WB analysis of various samples using GTX57617 Beclin 1 antibody.

Lane 1 : Recombinant Human BECN1 protein (10 ng)

Lane 2 : Balb/3T3 whole cell lysate (40 μ g)


GTX57617 ICC/IF Image

ICC/IF analysis of HeLa cells using GTX57617 Beclin 1 antibody.

Blue: DAPI

Green: Primary antibody

Dilution: 1:100



For full product information, images and publications, please visit our [website](https://www.genetex.com).