

# alpha Smooth Muscle Actin antibody [AT132D3]

**Cat. No. GTX57619**

<b>Host</b>	Mouse
<b>Clonality</b>	Monoclonal
<b>Isotype</b>	IgG1
<b>Application</b>	WB, ICC/IF, FACS
<b>Reactivity</b>	Human

**Package**  
100 µl

## APPLICATION

### Application Note

\*Optimal dilutions/concentrations should be determined by the researcher.

Suggested dilution	Recommended dilution
WB	Recommended starting dilution is 1:1000.
ICC/IF	Assay dependent
FACS	Assay dependent

Not tested in other applications.

**Calculated MW** 42 kDa. ( [Note](#) )

## PROPERTIES

<b>Form</b>	Liquid
<b>Buffer</b>	PBS, 10% Glycerol
<b>Preservative</b>	0.02% Sodium azide
<b>Storage</b>	Store as concentrated solution. Centrifuge briefly prior to opening vial. For short-term storage (1-2 weeks), store at 4°C. For long-term storage, aliquot and store at -20°C or below. Avoid multiple freeze-thaw cycles.
<b>Concentration</b>	1 mg/ml (Please refer to the vial label for the specific concentration.)
<b>Immunogen</b>	The clone AT132D3 is derived from hybridization of mouse F0 myeloma cells with spleen cells from BALB/c mice immunized with a recombinant human ACTA4 protein.
<b>Purification</b>	Protein A Purified
<b>Conjugation</b>	Unconjugated

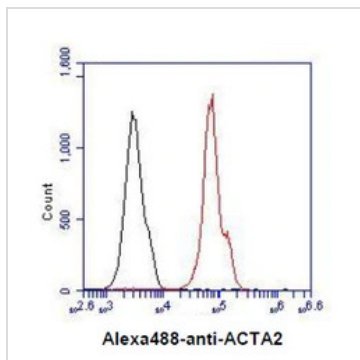
### Note

For laboratory research use only. Not for any clinical, therapeutic, or diagnostic use in humans or animals. Not for animal or human consumption.

Purchasers shall not, and agree not to enable third parties to, analyze, copy, reverse engineer or otherwise attempt to determine the structure or sequence of the product.



For full product information, images and publications, please visit our [website](#).

**DATA IMAGES**

**GTX57619 FACS Image**

FACS analysis of Nb2-11 cells using GTX57619 alpha Smooth Muscle Actin antibody.

Cell Number:  $1 \times 10^6$  cells

Primary antibody: Red line

Antibody amount: 2-5  $\mu$ g

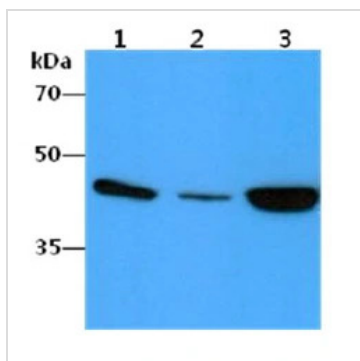

**GTX57619 ICC/IF Image**

ICC/IF analysis of HeLa cells using GTX57619 alpha Smooth Muscle Actin antibody.

Blue: DAPI

Green: Primary antibody

Dilution: 1:100


**GTX57619 WB Image**

WB analysis of various samples using GTX57619 alpha Smooth Muscle Actin antibody.

Lane 1 : HepG2 whole cell lysate

Lane 2 : SW480 whole cell lysate

Lane 3 : HeLa whole cell lysate

Loading : 40  $\mu$ g

Dilution : 1:1000



For full product information, images and publications, please visit our [website](https://www.genetex.com).