

Fascin 1 antibody [AT13D2]

Cat. No. GTX57621

Host	Mouse
Clonality	Monoclonal
Isotype	IgG2b
Applications	WB, ICC/IF, FCM
Reactivity	Human

Package
100 µl

Applications

Application Note

*Optimal dilutions/concentrations should be determined by the researcher.

Suggested dilution	Recommended dilution
WB	Assay dependent
ICC/IF	Assay dependent
FCM	Assay dependent

Not tested in other applications.

Calculated MW 55 kDa. ([Note](#))

Properties

Form	Liquid
Buffer	PBS, 10% Glycerol
Preservative	0.02% Sodium azide
Storage	Store as concentrated solution. Centrifuge briefly prior to opening vial. For short-term storage (1-2 weeks), store at 4°C. For long-term storage, aliquot and store at -20°C or below. Avoid multiple freeze-thaw cycles.
Concentration	1 mg/ml (Please refer to the vial label for the specific concentration.)
Immunogen	The clone AT13D2 is derived from hybridization of mouse F0 myeloma cells with spleen cells from BALB/c mice immunized with a recombinant human FSCN3 protein.
Purification	Protein A Purified
Conjugation	Unconjugated

Note

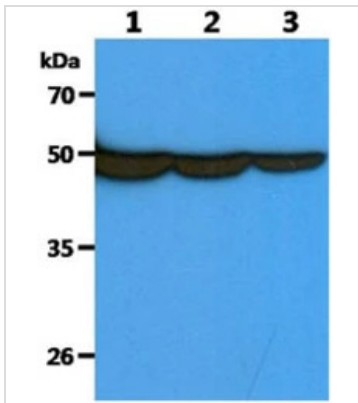
For laboratory research use only. Not for any clinical, therapeutic, or diagnostic use in humans or animals. Not for animal or human consumption.

Purchasers shall not, and agree not to enable third parties to, analyze, copy, reverse engineer or otherwise attempt to determine the structure or sequence of the product.



For full product information, images and publications, please visit our [website](#).

DATA IMAGES



GTX57621 WB Image

WB analysis of various samples using GTX57621 Fascin 1 antibody.

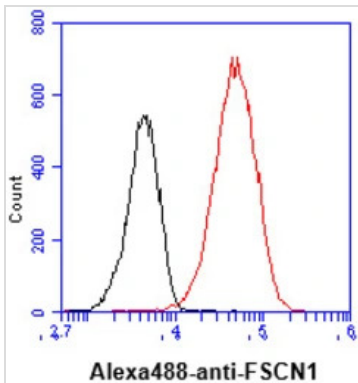
Lane 1 : HeLa whole cell lysate

Lane 2 : HepG2 whole cell lysate

Lane 3 : THP-1 whole cell lysate

Loading : 40 µg

Dilution : 1:1000



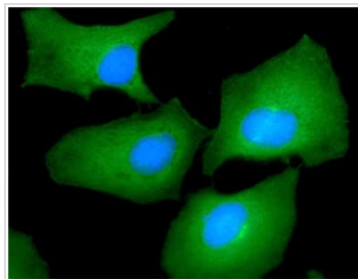
GTX57621 FCM Image

FACS analysis of HeLa cells using GTX57621 Fascin 1 antibody.

Cell Number: 1 x 10⁶ cells

Primary antibody: Red line

Antibody amount: 2-5 µg



GTX57621 ICC/IF Image

ICC/IF analysis of HeLa cells using GTX57621 Fascin 1 antibody.

Blue: DAPI

Green: Primary antibody

Dilution: 1:100



For full product information, images and publications, please visit our [website](https://www.genetex.com).