

Cytokeratin 5 antibody [AT12C4]

Cat. No. GTX57627

Host	Mouse
Clonality	Monoclonal
Isotype	IgG2a
Applications	WB, ICC/IF, IHC-P, FCM
Reactivity	Human

Package
100 µl

Applications

Application Note

*Optimal dilutions/concentrations should be determined by the researcher.

Suggested dilution	Recommended dilution
WB	Assay dependent
ICC/IF	Assay dependent
IHC-P	Assay dependent
FCM	Assay dependent

Not tested in other applications.

Calculated MW 62 kDa. ([Note](#))

Properties

Form	Liquid
Buffer	PBS, 10% Glycerol
Preservative	0.02% Sodium azide
Storage	Store as concentrated solution. Centrifuge briefly prior to opening vial. For short-term storage (1-2 weeks), store at 4°C. For long-term storage, aliquot and store at -20°C or below. Avoid multiple freeze-thaw cycles.
Concentration	1 mg/ml (Please refer to the vial label for the specific concentration.)
Immunogen	The clone AT12C4 is derived from hybridization of mouse F0 myeloma cells with spleen cells from BALB/c mice immunized with a recombinant human KRT7 protein.
Purification	Protein A Purified
Conjugation	Unconjugated

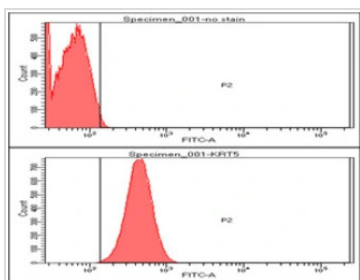


For full product information, images and publications, please visit our [website](#).

For laboratory research use only. Not for any clinical, therapeutic, or diagnostic use in humans or animals. Not for animal or human consumption.

Note

Purchasers shall not, and agree not to enable third parties to, analyze, copy, reverse engineer or otherwise attempt to determine the structure or sequence of the product.

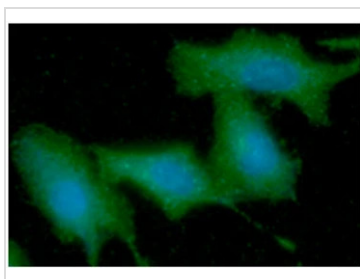
DATA IMAGES

GTX57627 FCM Image

FACS analysis of HeLa cells using GTX57627 Cytokeratin 5 antibody.

Cell Number: 1×10^6 cells

Red: Primary antibody

Antibody amount: 2-5 μ g

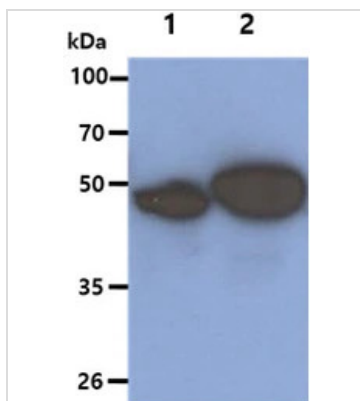

GTX57627 ICC/IF Image

ICC/IF analysis of A549 cells using GTX57627 Cytokeratin 5 antibody.

Blue: DAPI

Green: Primary antibody

Dilution: 1:100


GTX57627 WB Image

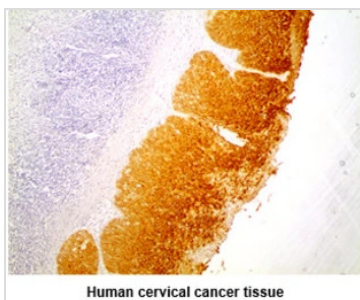
WB analysis of various samples using GTX57627 Cytokeratin 5 antibody.

Lane 1 : HeLa whole cell lysate

Lane 2 : A431 whole cell lysate

Loading : 40 μ g

Dilution : 1:1000


GTX57627 IHC-P Image

IHC-P analysis of human cervical cancer using GTX57627 Cytokeratin 5 antibody.

Antigen retrieval: 0.1M sodium citrate buffer

Dilution: 1:200



For full product information, images and publications, please visit our [website](https://www.genetex.com).