

Aldolase C antibody [AT2E11]

Cat. No. GTX57650

Host	Mouse
Clonality	Monoclonal
Isotype	IgG1
Applications	WB, ICC/IF
Reactivity	Human, Mouse

Package
100 µl

Applications

Application Note

*Optimal dilutions/concentrations should be determined by the researcher.

Suggested dilution	Recommended dilution
WB	Assay dependent
ICC/IF	Assay dependent

Not tested in other applications.

Calculated MW 39 kDa. ([Note](#))

Properties

Form	Liquid
Buffer	PBS, 10% Glycerol
Preservative	0.02% Sodium azide
Storage	Store as concentrated solution. Centrifuge briefly prior to opening vial. For short-term storage (1-2 weeks), store at 4°C. For long-term storage, aliquot and store at -20°C or below. Avoid multiple freeze-thaw cycles.
Concentration	1 mg/ml (Please refer to the vial label for the specific concentration.)
Immunogen	The clone AT2E11 is derived from hybridization of mouse F2 myeloma cells with spleen cells from BALB/c mice immunized with a recombinant human ALDOC protein.
Purification	Protein A Purified
Conjugation	Unconjugated

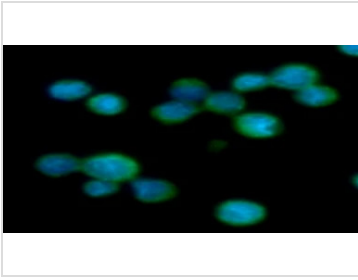
Note

For laboratory research use only. Not for any clinical, therapeutic, or diagnostic use in humans or animals. Not for animal or human consumption.

Purchasers shall not, and agree not to enable third parties to, analyze, copy, reverse engineer or otherwise attempt to determine the structure or sequence of the product.



For full product information, images and publications, please visit our [website](#).

DATA IMAGES

GTX57650 ICC/IF Image

ICC/IF analysis of Jurkat cells using GTX57650 Aldolase C antibody.

Blue: DAPI

Green: Primary antibody

Dilution: 1:100

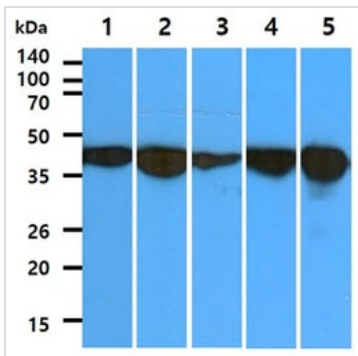

GTX57650 ICC/IF Image

ICC/IF analysis of U87-MG cells using GTX57650 Aldolase C antibody.

Blue: DAPI

Green: Primary antibody

Dilution: 1:100


GTX57650 WB Image

WB analysis of various samples using GTX57650 Aldolase C antibody.

Lane 1 : PC-3 whole cell lysate

Lane 2 : U87-MG whole cell lysate

Lane 3 : WiDr whole cell lysate

Lane 4 : Jurkat whole cell lysate

Lane 5 : Mouse brain tissue lysate

Loading : 40 µg

Dilution : 1:1000



For full product information, images and publications, please visit our [website](https://www.genetex.com).