

TXN2 antibody [AT1B1]

Cat. No. GTX57676

Host	Mouse
Clonality	Monoclonal
Isotype	IgG2b
Applications	WB, ICC/IF
Reactivity	Human

Package
100 µl

Applications

Application Note

*Optimal dilutions/concentrations should be determined by the researcher.

Suggested dilution	Recommended dilution
WB	Assay dependent
ICC/IF	Assay dependent

Not tested in other applications.

Calculated MW 18 kDa. ([Note](#))**Product Note** Based on internal testing result, this antibody does not cross react with human Thioredoxin1.

Properties

Form	Liquid
Buffer	PBS, 10% Glycerol
Preservative	0.02% Sodium azide
Storage	Store as concentrated solution. Centrifuge briefly prior to opening vial. For short-term storage (1-2 weeks), store at 4°C. For long-term storage, aliquot and store at -20°C or below. Avoid multiple freeze-thaw cycles.
Concentration	1 mg/ml (Please refer to the vial label for the specific concentration.)
Immunogen	The clone AT1B1 is derived from hybridization of mouse F0 myeloma cells with spleen cells from BALB/c mice immunized with a recombinant human TXN4 protein.
Purification	Protein A Purified
Conjugation	Unconjugated

Note

For laboratory research use only. Not for any clinical, therapeutic, or diagnostic use in humans or animals. Not for animal or human consumption.

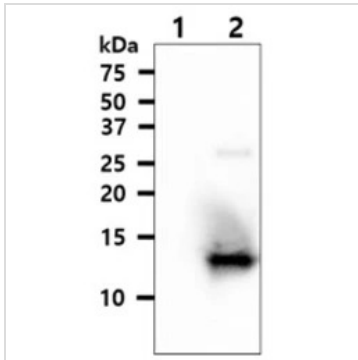
Purchasers shall not, and agree not to enable third parties to, analyze, copy, reverse engineer or otherwise attempt to determine the structure or sequence of the product.



For full product information, images and publications, please visit our [website](#).

Date 2026 / 02 / 04 Page 1 of 2

DATA IMAGES



GTX57676 WB Image

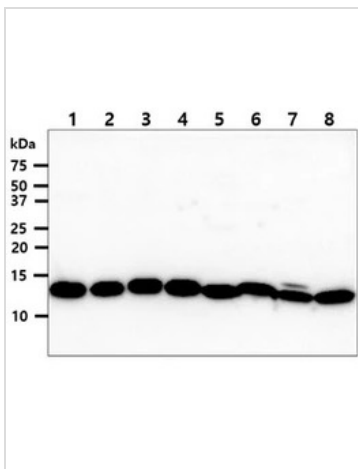
WB analysis of various samples using GTX57676 TXN2 antibody.

Lane 1 : Recombinant Human Thioredoxin1 protein

Lane 2 : Recombinant Human Thioredoxin2 protein

Loading : 50 ng

Dilution : 1:1000



GTX57676 WB Image

WB analysis of various samples using GTX57676 TXN2 antibody.

Lane 1 : HepG2 whole cell lysate

Lane 2 : HeLa whole cell lysate

Lane 3 : Raji whole cell lysate

Lane 4 : K562 whole cell lysate

Lane 5 : Jurkat whole cell lysate

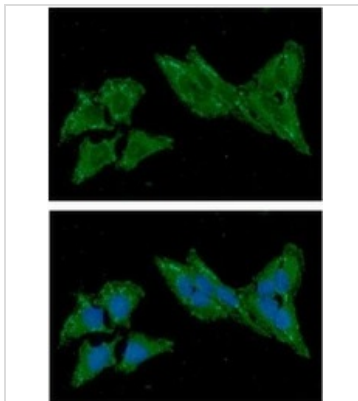
Lane 6 : A431 whole cell lysate

Lane 7 : MCF-7 whole cell lysate

Lane 8 : THP-1 whole cell lysate

Loading : 40 µg

Dilution : 1:1000



GTX57676 ICC/IF Image

ICC/IF analysis of HeLa cells using GTX57676 TXN2 antibody.

Blue: DAPI

Green: Primary antibody

Dilution: 1:100



For full product information, images and publications, please visit our [website](https://www.genetex.com).