

## BAG2 antibody [AT29E9]

Cat. No. GTX57685

Host	Mouse
Clonality	Monoclonal
Isotype	IgG2a
Application	WB, ICC/IF
Reactivity	Human

Package  
100 µl

## APPLICATION

## Application Note

\*Optimal dilutions/concentrations should be determined by the researcher.

Suggested dilution	Recommended dilution
WB	Assay dependent
ICC/IF	Assay dependent

Not tested in other applications.

Calculated MW 24 kDa. ( [Note](#) )

## PROPERTIES

Form	Liquid
Buffer	PBS, 10% Glycerol
Preservative	0.02% Sodium azide
Storage	Store as concentrated solution. Centrifuge briefly prior to opening vial. For short-term storage (1-2 weeks), store at 4°C. For long-term storage, aliquot and store at -20°C or below. Avoid multiple freeze-thaw cycles.
Concentration	1 mg/ml (Please refer to the vial label for the specific concentration.)
Immunogen	The clone AT29E9 is derived from hybridization of mouse F0 myeloma cells with spleen cells from BALB/c mice immunized with a recombinant human BAG4 protein.
Purification	Protein A Purified
Conjugation	Unconjugated

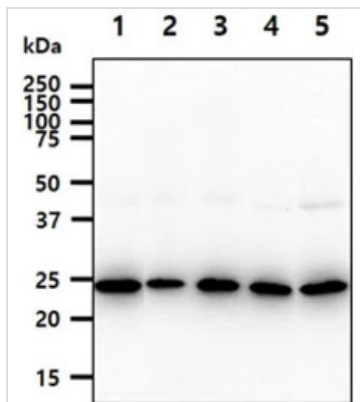
## Note

For laboratory research use only. Not for any clinical, therapeutic, or diagnostic use in humans or animals. Not for animal or human consumption.

Purchasers shall not, and agree not to enable third parties to, analyze, copy, reverse engineer or otherwise attempt to determine the structure or sequence of the product.



For full product information, images and publications, please visit our [website](#).

**DATA IMAGES**

**GTX57685 WB Image**

WB analysis of various samples using GTX57685 BAG2 antibody.

Lane 1 : Jurkat whole cell lysate

Lane 2 : A549 whole cell lysate

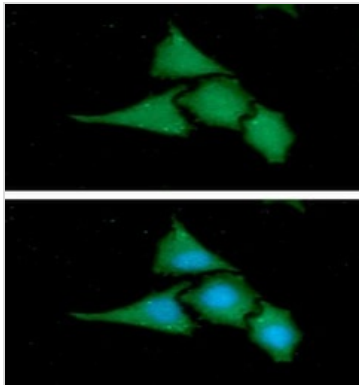
Lane 3 : K562 whole cell lysate

Lane 4 : HepG2 whole cell lysate

Lane 5 : HeLa whole cell lysate

Loading : 40 µg

Dilution : 1:1000


**GTX57685 ICC/IF Image**

ICC/IF analysis of HeLa cells using GTX57685 BAG2 antibody.

Blue: DAPI

Green: Primary antibody

Dilution: 1:100



For full product information, images and publications, please visit our [website](https://www.genetex.com).