

## RAB7A antibody [AT10E4]

Cat. No. GTX57709

Host	Mouse
Clonality	Monoclonal
Isotype	IgG2a
Application	WB, ICC/IF, FACS
Reactivity	Human

Package  
100 µl

## APPLICATION

## Application Note

\*Optimal dilutions/concentrations should be determined by the researcher.

Suggested dilution	Recommended dilution
WB	Assay dependent
ICC/IF	Assay dependent
FACS	Assay dependent

Not tested in other applications.

Calculated MW 23 kDa. ( [Note](#) )

## PROPERTIES

Form	Liquid
Buffer	PBS, 10% Glycerol
Preservative	0.02% Sodium azide
Storage	Store as concentrated solution. Centrifuge briefly prior to opening vial. For short-term storage (1-2 weeks), store at 4°C. For long-term storage, aliquot and store at -20°C or below. Avoid multiple freeze-thaw cycles.
Concentration	1 mg/ml (Please refer to the vial label for the specific concentration.)
Immunogen	The clone AT10E4 is derived from hybridization of mouse F0 myeloma cells with spleen cells from BALB/c mice immunized with a recombinant human RAB9A protein.
Purification	Protein A Purified
Conjugation	Unconjugated

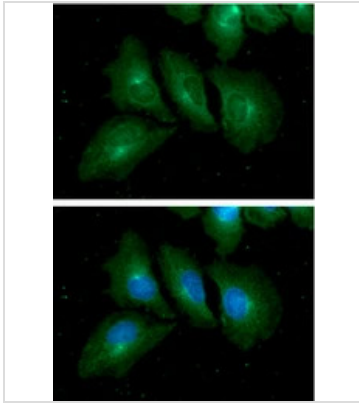
## Note

For laboratory research use only. Not for any clinical, therapeutic, or diagnostic use in humans or animals. Not for animal or human consumption.

Purchasers shall not, and agree not to enable third parties to, analyze, copy, reverse engineer or otherwise attempt to determine the structure or sequence of the product.



For full product information, images and publications, please visit our [website](#).

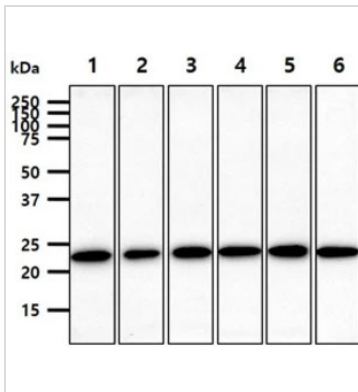
**DATA IMAGES**

**GTX57709 ICC/IF Image**

ICC/IF analysis of HeLa cells using GTX57709 RAB7A antibody.

Blue: DAPI

Green: Primary antibody

Dilution: 1:100


**GTX57709 WB Image**

WB analysis of various samples using GTX57709 RAB7A antibody.

Lane 1 : HeLa whole cell lysate

Lane 2 : Jurkat whole cell lysate

Lane 3 : MCF-7 whole cell lysate

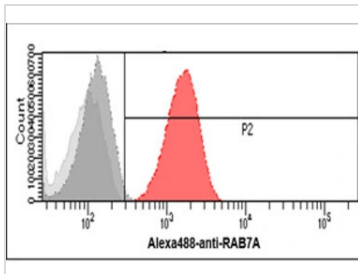
Lane 4 : PC-3 whole cell lysate

Lane 5 : 293T whole cell lysate

Lane 6 : SK-OV-3 whole cell lysate

Loading : 40 µg

Dilution : 1:1000


**GTX57709 FACS Image**

FACS analysis of HeLa cells using GTX57709 RAB7A antibody.

Cell Number: 1 x 10<sup>6</sup> cells

Red: Primary antibody

Antibody amount: 2-5 µg



For full product information, images and publications, please visit our [website](https://www.genetex.com).