

NMT1 antibody [AT2C8]

Cat. No. GTX57729

Host	Mouse
Clonality	Monoclonal
Isotype	IgG2a
Applications	WB, ICC/IF
Reactivity	Human

Package
100 µl

Applications

Application Note

*Optimal dilutions/concentrations should be determined by the researcher.

Suggested dilution	Recommended dilution
WB	Assay dependent
ICC/IF	Assay dependent

Not tested in other applications.

Calculated MW 57 kDa. ([Note](#))

Properties

Form	Liquid
Buffer	PBS, 10% Glycerol
Preservative	0.02% Sodium azide
Storage	Store as concentrated solution. Centrifuge briefly prior to opening vial. For short-term storage (1-2 weeks), store at 4°C. For long-term storage, aliquot and store at -20°C or below. Avoid multiple freeze-thaw cycles.
Concentration	1 mg/ml (Please refer to the vial label for the specific concentration.)
Immunogen	Recombinant human NMT1 (1-496aa) purified from E. coli
Purification	Protein A Purified
Conjugation	Unconjugated

Note

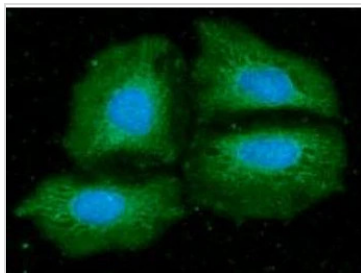
For laboratory research use only. Not for any clinical, therapeutic, or diagnostic use in humans or animals. Not for animal or human consumption.

Purchasers shall not, and agree not to enable third parties to, analyze, copy, reverse engineer or otherwise attempt to determine the structure or sequence of the product.



For full product information, images and publications, please visit our [website](#).

DATA IMAGES



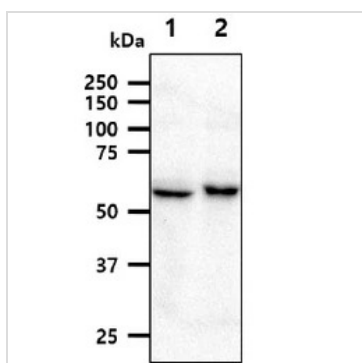
GTX57729 ICC/IF Image

ICC/IF analysis of HeLa cells using GTX57729 NMT1 antibody.

Blue: DAPI

Green: Primary antibody

Dilution: 1:100



GTX57729 WB Image

WB analysis of various samples using GTX57729 NMT1 antibody [AT2C8].

Lane 1 : HepG2 whole cell lysate

Lane 2 : 293T whole cell lysate

Loading : 40µg



For full product information, images and publications, please visit our [website](https://www.genetex.com).