

# EphB1 antibody

**Cat. No. GTX57739**

<b>Host</b>	Rabbit
<b>Clonality</b>	Polyclonal
<b>Isotype</b>	IgG
<b>Applications</b>	WB, ICC/IF, FCM, LCI
<b>Reactivity</b>	Human, Mouse, Rat

**Package**

50 µl

## Applications

### Application Note

\*Optimal dilutions/concentrations should be determined by the researcher.

Suggested dilution	Recommended dilution
WB	Assay dependent
ICC/IF	Assay dependent
FCM	Assay dependent
LCI	Assay dependent

Not tested in other applications.

**Calculated MW** 110 kDa. ([Note](#))

## Properties

<b>Form</b>	Liquid
<b>Buffer</b>	PBS, 1% BSA
<b>Preservative</b>	0.05% Sodium azide
<b>Storage</b>	Store as concentrated solution. Centrifuge briefly prior to opening vial. For short-term storage (1-2 weeks), store at 4°C. For long-term storage, aliquot and store at -20°C or below. Avoid multiple freeze-thaw cycles.
<b>Concentration</b>	0.8 mg/ml (Please refer to the vial label for the specific concentration.)
<b>Immunogen</b>	Peptide (C)RSQNTARIDGLR, corresponding to amino acid residues 485-497 of mouse EphB1 (Accession Q8CBF3). Extracellular, N-terminus.
<b>Purification</b>	Purified by antigen-affinity chromatography
<b>Conjugation</b>	Unconjugated

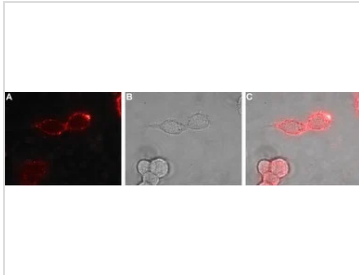


For full product information, images and publications, please visit our [website](#).

For laboratory research use only. Not for any clinical, therapeutic, or diagnostic use in humans or animals. Not for animal or human consumption.

**Note**

Purchasers shall not, and agree not to enable third parties to, analyze, copy, reverse engineer or otherwise attempt to determine the structure or sequence of the product.

**DATA IMAGES**

**GTX57739 LCI Image**

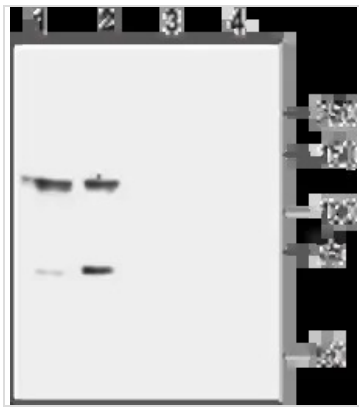
Live cell imaging analysis of PC-12 cells using GTX57739 EphB1 antibody.

Panel A : Primary antibody

Panel B : Live view of the cells

Panel C : Merged of panel A and B

Dilution : 1:100

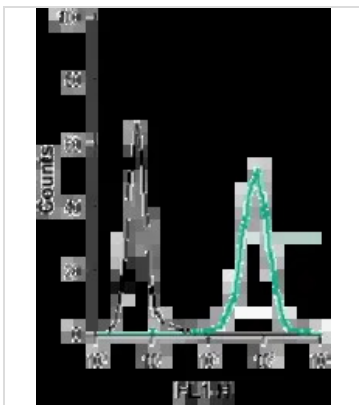

**GTX57739 WB Image**

WB analysis of mouse (lanes 1 and 3) and rat (lanes 2 and 4) brain membrane lysates using GTX57739 EphB1 antibody.

Lane 1 and 2 : Primary antibody

Lane 3 and 4 : Primary antibody preincubated with the control peptide antigen

Dilution : 1:800


**GTX57739 FCM Image**

FACS analysis of THP-1 cells using GTX57739 EphB1 antibody.

Black : Unstained cells

Green : Cells with primary antibody

Dilution : 1:15



For full product information, images and publications, please visit our [website](https://www.genetex.com).