

EphB1 antibody

Cat. No. GTX57739

Host	Rabbit
Clonality	Polyclonal
Isotype	IgG
Applications	WB, ICC/IF, FCM, LCI
Reactivity	Human, Mouse, Rat

Package

50 µl

Applications

Application Note

*Optimal dilutions/concentrations should be determined by the researcher.

Suggested dilution	Recommended dilution
WB	Assay dependent
ICC/IF	Assay dependent
FCM	Assay dependent
LCI	Assay dependent

Not tested in other applications.

Calculated MW 110 kDa. ([Note](#))

Properties

Form	Liquid
Buffer	PBS, 1% BSA
Preservative	0.05% Sodium azide
Storage	Store as concentrated solution. Centrifuge briefly prior to opening vial. For short-term storage (1-2 weeks), store at 4°C. For long-term storage, aliquot and store at -20°C or below. Avoid multiple freeze-thaw cycles.
Concentration	0.8 mg/ml (Please refer to the vial label for the specific concentration.)
Immunogen	Peptide (C)RSQNTARIDGLR, corresponding to amino acid residues 485-497 of mouse EphB1 (Accession Q8CBF3). Extracellular, N-terminus.
Purification	Purified by antigen-affinity chromatography
Conjugation	Unconjugated

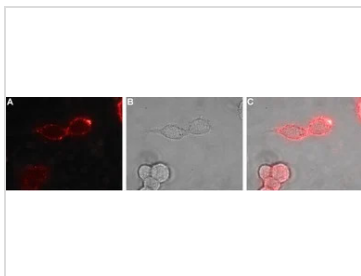


For full product information, images and publications, please visit our [website](#).

For laboratory research use only. Not for any clinical, therapeutic, or diagnostic use in humans or animals. Not for animal or human consumption.

Note

Purchasers shall not, and agree not to enable third parties to, analyze, copy, reverse engineer or otherwise attempt to determine the structure or sequence of the product.

DATA IMAGES

GTX57739 LCI Image

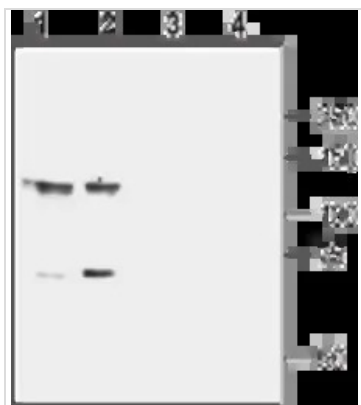
Live cell imaging analysis of PC-12 cells using GTX57739 EphB1 antibody.

Panel A : Primary antibody

Panel B : Live view of the cells

Panel C : Merged of panel A and B

Dilution : 1:100

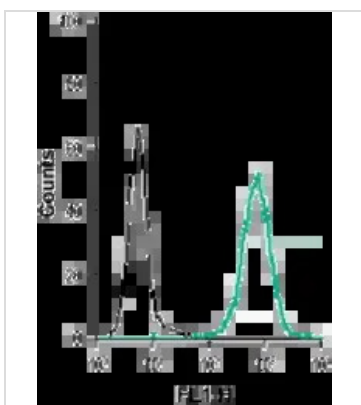

GTX57739 WB Image

WB analysis of mouse (lanes 1 and 3) and rat (lanes 2 and 4) brain membrane lysates using GTX57739 EphB1 antibody.

Lane 1 and 2 : Primary antibody

Lane 3 and 4 : Primary antibody preincubated with the control peptide antigen

Dilution : 1:800


GTX57739 FCM Image

FACS analysis of THP-1 cells using GTX57739 EphB1 antibody.

Black : Unstained cells

Green : Cells with primary antibody

Dilution : 1:15



For full product information, images and publications, please visit our [website](https://www.genetex.com).