

HDAC8 antibody

Cat. No. GTX57746

| | |
|---------------------|-------------------|
| Host | Rabbit |
| Clonality | Polyclonal |
| Isotype | IgG |
| Applications | WB, IHC-P |
| Reactivity | Human, Mouse, Rat |

Package
100 µl

Applications

Application Note

*Optimal dilutions/concentrations should be determined by the researcher.

| Suggested dilution | Recommended dilution |
|--------------------|----------------------|
| WB | 1:500 - 1:2000 |
| IHC-P | 1:50 - 1:200 |

Not tested in other applications.

Calculated MW 42 kDa. ([Note](#))

Properties

| | |
|----------------------|--|
| Form | Liquid |
| Buffer | PBS, 50% Glycerol |
| Preservative | 0.02% Sodium azide |
| Storage | Store as concentrated solution. Centrifuge briefly prior to opening vial. For short-term storage (1-2 weeks), store at 4°C. For long-term storage, aliquot and store at -20°C or below. Avoid multiple freeze-thaw cycles. |
| Concentration | Batch dependent (Please refer to the vial label for the specific concentration.) |
| Immunogen | Recombinant fusion protein containing a sequence corresponding to amino acids 1-377 of human HDAC8 (NP_060956.1). |
| Purification | Purified by affinity chromatography |
| Conjugation | Unconjugated |

Note

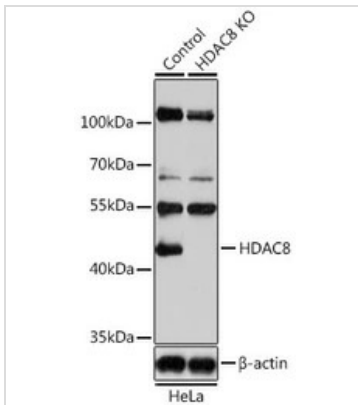
For laboratory research use only. Not for any clinical, therapeutic, or diagnostic use in humans or animals. Not for animal or human consumption.

Purchasers shall not, and agree not to enable third parties to, analyze, copy, reverse engineer or otherwise attempt to determine the structure or sequence of the product.



For full product information, images and publications, please visit our [website](#).

DATA IMAGES

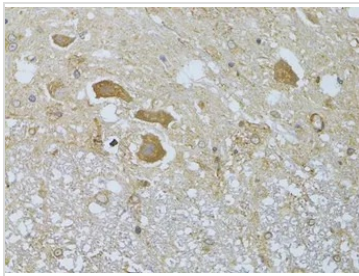


GTX57746 WB Image

WB analysis of normal (control) and knockout (KO) HeLa cell lysate using GTX57746 HDAC8 antibody.

Dilution : 1:1000

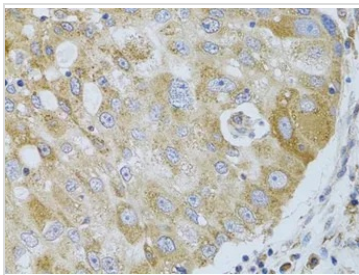
Loading : 25µg per lane



GTX57746 IHC-P Image

IHC-P analysis of rat spinal cord tissue using GTX57746 HDAC8 antibody.

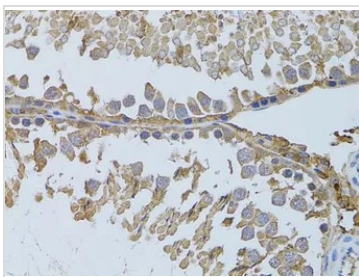
Dilution : 1:100



GTX57746 IHC-P Image

IHC-P analysis of human breast cancer tissue using GTX57746 HDAC8 antibody.

Dilution : 1:100



GTX57746 IHC-P Image

IHC-P analysis of rat testis tissue using GTX57746 HDAC8 antibody.

Dilution : 1:100



For full product information, images and publications, please visit our [website](https://www.genetex.com).