

# LOXL3 antibody

**Cat. No. GTX57750**

<b>Host</b>	Rabbit
<b>Clonality</b>	Polyclonal
<b>Isotype</b>	IgG
<b>Applications</b>	WB
<b>Reactivity</b>	Human

References ( 1 )

Package

100 µl

## Applications

### Application Note

\*Optimal dilutions/concentrations should be determined by the researcher.

Suggested dilution	Recommended dilution
WB	Assay dependent
Not tested in other applications.	

**Calculated MW** 83 kDa. ( [Note](#) )

## Properties

<b>Form</b>	Liquid
<b>Buffer</b>	PBS, 2% Sucrose
<b>Preservative</b>	0.09% Sodium azide
<b>Storage</b>	Store as concentrated solution. Centrifuge briefly prior to opening vial. For short-term storage (1-2 weeks), store at 4°C. For long-term storage, aliquot and store at -20°C or below. Avoid multiple freeze-thaw cycles.
<b>Concentration</b>	0.5-1 mg/ml (Please refer to the vial label for the specific concentration.)
<b>Immunogen</b>	The immunogen is a synthetic peptide directed towards the middle region of human LOXL3
<b>Purification</b>	Purified by affinity chromatography
<b>Conjugation</b>	Unconjugated

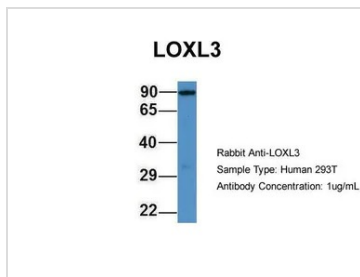
### Note

For laboratory research use only. Not for any clinical, therapeutic, or diagnostic use in humans or animals. Not for animal or human consumption.

Purchasers shall not, and agree not to enable third parties to, analyze, copy, reverse engineer or otherwise attempt to determine the structure or sequence of the product.

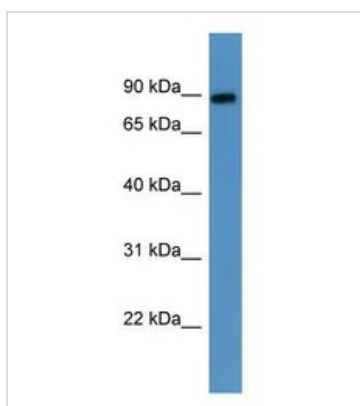


For full product information, images and publications, please visit our [website](#).

**DATA IMAGES**

**GTX57750 WB Image**

WB analysis of 239T cell lysate using GTX57750 LOXL3 antibody.

Dilution : 1 µg/ml


**GTX57750 WB Image**

WB analysis of human placenta lysate using GTX57750 LOXL3 antibody.

Dilution : 0.2-1 µg/ml



For full product information, images and publications, please visit our [website](#).