

## PPAR gamma antibody

**Cat. No. GTX57756**

|                     |                         |
|---------------------|-------------------------|
| <b>Host</b>         | Rabbit                  |
| <b>Clonality</b>    | Polyclonal              |
| <b>Isotype</b>      | IgG                     |
| <b>Applications</b> | WB, ICC/IF, IHC-P, FCM  |
| <b>Reactivity</b>   | Human, Mouse, Rat, Goat |

References ( 1 )

Package

100 µl

## Applications

**Application Note**

\*Optimal dilutions/concentrations should be determined by the researcher.

| Suggested dilution | Recommended dilution |
|--------------------|----------------------|
| WB                 | 1:300-1:1000         |
| ICC/IF             | Assay dependent      |
| IHC-P              | 1:200-1:400          |
| FCM                | 1:20-1:100           |

Not tested in other applications.

**Calculated MW** 57.62 kDa. ([Note](#))

## Properties

|                      |  |
|----------------------|--|
| <b>Form</b>          | Liquid   |
| <b>Buffer</b>        | 1% BSA, 50% Glycerol   |
| <b>Preservative</b>  | 0.09% Sodium azide   |
| <b>Storage</b>       | Store as concentrated solution. Centrifuge briefly prior to opening vial. For short-term storage (1-2 weeks), store at 4°C. For long-term storage, aliquot and store at -20°C or below. Avoid multiple freeze-thaw cycles. |
| <b>Concentration</b> | 1 mg/ml (Please refer to the vial label for the specific concentration.)   |
| <b>Immunogen</b>     | KLH conjugated synthetic peptide derived from human PPAR Gamma   |
| <b>Purification</b>  | Protein A purified   |
| <b>Conjugation</b>   | Unconjugated   |

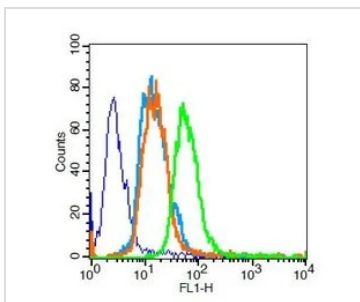
**Note**

For laboratory research use only. Not for any clinical, therapeutic, or diagnostic use in humans or animals. Not for animal or human consumption.

Purchasers shall not, and agree not to enable third parties to, analyze, copy, reverse engineer or otherwise attempt to determine the structure or sequence of the product.

For full product information, images and publications, please visit our [website](#).

## DATA IMAGES

**GTX57756 FCM Image**

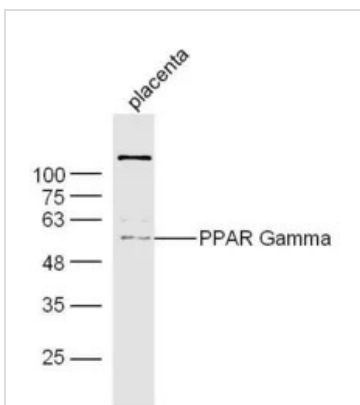
FACS analysis of U251 cells using GTX57756 PPAR gamma antibody.

Green : Primary antibody

Blue : Cell only

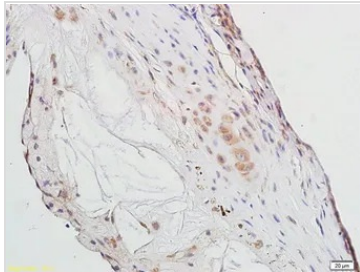
Light Blue : Secondary antibody only

Orange : Isotype control

**GTX57756 WB Image**

WB analysis of mouse placenta tissue lysates using GTX57756 PPAR gamma antibody.

Dilution : 1:300

**GTX57756 IHC-P Image**

IHC-P analysis of rat aorta tissue using GTX57756 PPAR gamma antibody.

Dilution : 1:300



For full product information, images and publications, please visit our [website](#).