

AKT (phospho Ser473) antibody

Cat. No. GTX59559

Host	Rabbit
Clonality	Polyclonal
Isotype	IgG
Applications	WB, IP
Reactivity	Human, Mouse, Rat

References (3)

Package

50 µg

Applications

Application Note

*Optimal dilutions/concentrations should be determined by the researcher.

Suggested dilution	Recommended dilution
WB	0.5-4 µg/ml
IP	10-20 µg/ml

Not tested in other applications.

Product Note

The phospho-Akt (Ser473) antibody detects Akt1 when phosphorylated at Ser473 and Akt2 and Akt3 when phosphorylated at equivalent sites.

Properties

Form	Liquid
Buffer	PBS, 1% BSA, 50% Glycerol
Preservative	0.02% Thimerosal
Storage	Store as concentrated solution. Centrifuge briefly prior to opening vial. For short-term storage (1-2 weeks), store at 4°C. For long-term storage, aliquot and store at -20°C or below. Avoid multiple freeze-thaw cycles.
Concentration	0.5 mg/ml (Please refer to the vial label for the specific concentration.)
Immunogen	Synthetic phospho-peptide corresponding to residues surrounding Ser473 of mouse Akt
Purification	Purified by antigen-affinity chromatography
Conjugation	Unconjugated

Note

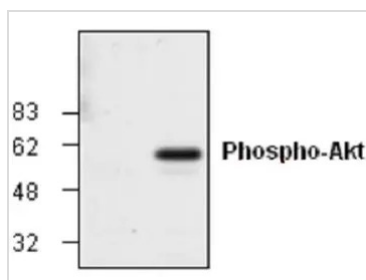
For laboratory research use only. Not for any clinical, therapeutic, or diagnostic use in humans or animals. Not for animal or human consumption.

Purchasers shall not, and agree not to enable third parties to, analyze, copy, reverse engineer or otherwise attempt to determine the structure or sequence of the product.



For full product information, images and publications, please visit our [website](#).

DATA IMAGES



GTX59559 WB Image

WB analysis of NIH3T3 cells treated without (left lane) or with (right lane) PDGF lysate using GTX59559 AKT (phospho Ser473) antibody.



For full product information, images and publications, please visit our [website](#).