

## Glucokinase antibody, N-term

Cat. No. GTX59598

Host	Rabbit
Clonality	Polyclonal
Isotype	IgG
Applications	WB, ICC/IF, IHC-P, FCM, ELISA, IHC
Reactivity	Human, Mouse

Package  
50 µg

## Applications

## Application Note

\*Optimal dilutions/concentrations should be determined by the researcher.

Suggested dilution	Recommended dilution
WB	0.5-2.5 µg/ml
ICC/IF	Assay dependent
IHC-P	Assay dependent
FCM	Assay dependent
ELISA	0.25 µg/ml
IHC	2.5-5.0 µg/ml

Not tested in other applications.

Calculated MW 52 kDa. ( [Note](#) )

## Properties

Form	Liquid
Buffer	PBS
Preservative	0.09% Sodium azide
Storage	Store as concentrated solution. Centrifuge briefly prior to opening vial. For short-term storage (1-2 weeks), store at 4°C. For long-term storage, aliquot and store at -20°C or below. Avoid multiple freeze-thaw cycles.
Concentration	0.25 mg/ml (Please refer to the vial label for the specific concentration.)
Immunogen	Synthetic peptide selected from the N-terminal region of human GCK
Purification	Purified by affinity chromatography
Conjugation	Unconjugated

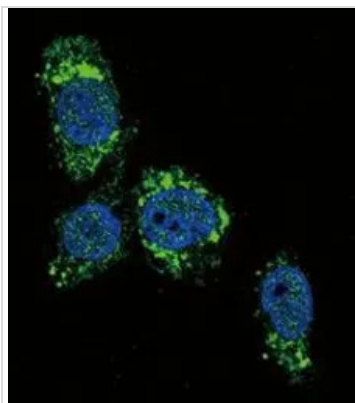
For full product information, images and publications, please visit our [website](#).

For laboratory research use only. Not for any clinical, therapeutic, or diagnostic use in humans or animals. Not for animal or human consumption.

## Note

Purchasers shall not, and agree not to enable third parties to, analyze, copy, reverse engineer or otherwise attempt to determine the structure or sequence of the product.

## DATA IMAGES

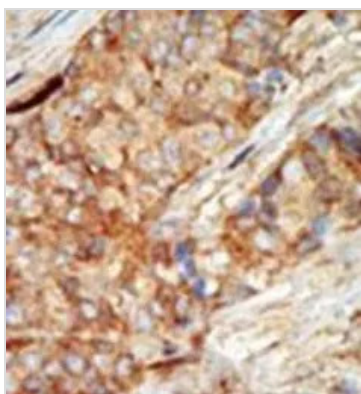


### GTX59598 ICC/IF Image

ICC/IF analysis of HepG2 cells using GTX59598 Glucokinase antibody, N-term.

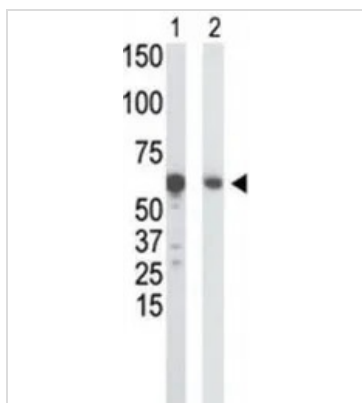
Green : Primary antibody

Blue : DAPI



### GTX59598 IHC-P Image

IHC-P analysis of human breast cancer tissue using Glucokinase antibody, N-term.



### GTX59598 WB Image

WB analysis of HepG2 cell lysate (Lane 1) and mouse liver tissue lysate (Lane 2) using GTX59598 Glucokinase antibody, N-term.



For full product information, images and publications, please visit our [website](https://www.genetex.com).