

# Bcl-XL antibody

**Cat. No. GTX59678**

<b>Host</b>	Rabbit
<b>Clonality</b>	Polyclonal
<b>Isotype</b>	IgG
<b>Application</b>	WB, IP
<b>Reactivity</b>	Human, Mouse, Rat

Reference ( 2 )  
Package  
100 µg

## APPLICATION

### Application Note

\*Optimal dilutions/concentrations should be determined by the researcher.

Suggested dilution	Recommended dilution
WB	0.5-4 µg/ml
IP	20 µg/ml

Not tested in other applications.

<b>Calculated MW</b>	26.05 kDa. ( <a href="#">Note</a> )
<b>Product Note</b>	The antibody detects the 30 kDa Bcl-xL protein. It does not react with other Bcl-2 family members.

## PROPERTIES

<b>Form</b>	Liquid
<b>Buffer</b>	PBS pH7.2, 30% Glycerol, 0.5% BSA
<b>Preservative</b>	0.01% Thimerosal
<b>Storage</b>	Store as concentrated solution. Centrifuge briefly prior to opening vial. For short-term storage (1-2 weeks), store at 4°C. For long-term storage, aliquot and store at -20°C or below. Avoid multiple freeze-thaw cycles.
<b>Concentration</b>	0.5 mg/ml (Please refer to the vial label for the specific concentration.)
<b>Immunogen</b>	Synthetic peptide surrounding amino acid 56 of human Bcl-xL
<b>Purification</b>	Purified by affinity chromatography
<b>Conjugation</b>	Unconjugated

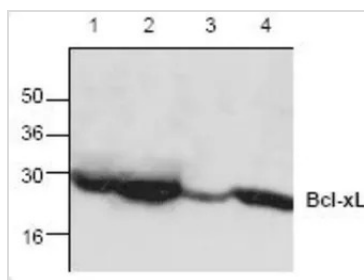
### Note

For laboratory research use only. Not for any clinical, therapeutic, or diagnostic use in humans or animals. Not for animal or human consumption.

Purchasers shall not, and agree not to enable third parties to, analyze, copy, reverse engineer or otherwise attempt to determine the structure or sequence of the product.



For full product information, images and publications, please visit our [website](#).

**DATA IMAGES**

**GTX59678 WB Image**

WB analysis of Jurkat (Lane 1 & 2), mouse small intestine (Lane 3), and rat kidney (Lane 4) lysates using GTX59678 Bcl-XL antibody.



For full product information, images and publications, please visit our [website](#).