

# BFP antibody

**Cat. No. GTX59680**

<b>Host</b>	Rabbit
<b>Clonality</b>	Polyclonal
<b>Isotype</b>	IgG
<b>Applications</b>	WB, ICC/IF, IP
<b>Reactivity</b>	Species independent

**Package**  
100 µg

## Applications

### Application Note

\*Optimal dilutions/concentrations should be determined by the researcher.

Suggested dilution	Recommended dilution
WB	0.5-4 µg/ml
ICC/IF	Assay dependent
IP	10-20 µg/ml

Not tested in other applications.

### Product Note

BFP antibody has strong cross-reactivity with CFP and moderate cross-reactivity with EGFP and YFP and very low cross-reactivity with RFP or mCherry.

## Properties

<b>Form</b>	Liquid
<b>Buffer</b>	PBS pH7.2, 30% Glycerol, 0.5% BSA, 5mM EDTA
<b>Preservative</b>	0.03% ProClin
<b>Storage</b>	Store as concentrated solution. Centrifuge briefly prior to opening vial. For short-term storage (1-2 weeks), store at 4°C. For long-term storage, aliquot and store at -20°C or below. Avoid multiple freeze-thaw cycles.
<b>Concentration</b>	0.5 mg/ml (Please refer to the vial label for the specific concentration.)
<b>Immunogen</b>	Recombinant BFP expressed from E. coli
<b>Purification</b>	Purified by affinity chromatography
<b>Conjugation</b>	Unconjugated

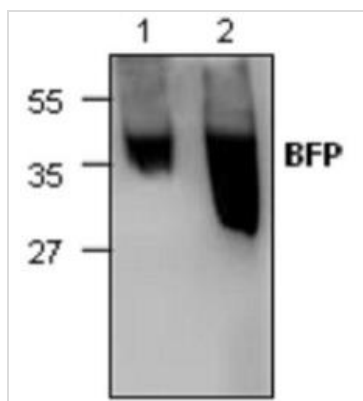
### Note

For laboratory research use only. Not for any clinical, therapeutic, or diagnostic use in humans or animals. Not for animal or human consumption.

Purchasers shall not, and agree not to enable third parties to, analyze, copy, reverse engineer or otherwise attempt to determine the structure or sequence of the product.



For full product information, images and publications, please visit our [website](#).

**DATA IMAGES**

**GTX59680 WB Image**

WB analysis of recombinant BFP protein using GTX59680 BFP antibody.

Lane 1 : 250 ng

Lane 2 : 1 µg



For full product information, images and publications, please visit our [website](#).