

Caspase 11 antibody

Cat. No. GTX59705

Host	Rabbit
Clonality	Polyclonal
Isotype	IgG
Application	WB
Reactivity	Mouse, Rat

Package
100 µg

APPLICATION

Application Note

*Optimal dilutions/concentrations should be determined by the researcher.

Suggested dilution	Recommended dilution
WB	0.5-4 µg/ml

Not tested in other applications.

Calculated MW	43 kDa. (Note)
Product Note	The antibody detects procaspase-11 (45 kDa), a partially cleaved fragment (30 kDa) and fully cleaved fragment (20 kDa).

PROPERTIES

Form	Liquid
Buffer	PBS pH7.2, 30% Glycerol, 0.5% BSA, 5mM EDTA
Preservative	0.03% ProClin
Storage	Store as concentrated solution. Centrifuge briefly prior to opening vial. For short-term storage (1-2 weeks), store at 4°C. For long-term storage, aliquot and store at -20°C or below. Avoid multiple freeze-thaw cycles.
Concentration	0.5 mg/ml (Please refer to the vial label for the specific concentration.)
Immunogen	Synthetic peptide surrounding amino acid 257 of rat caspase-11
Purification	Purified by affinity chromatography
Conjugation	Unconjugated

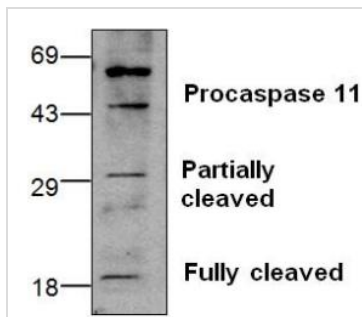
Note

For laboratory research use only. Not for any clinical, therapeutic, or diagnostic use in humans or animals. Not for animal or human consumption.

Purchasers shall not, and agree not to enable third parties to, analyze, copy, reverse engineer or otherwise attempt to determine the structure or sequence of the product.



For full product information, images and publications, please visit our [website](#).

DATA IMAGES

GTX59705 WB Image

WB analysis of 3T3 cell lysate using GTX59705 Caspase 11 antibody.



For full product information, images and publications, please visit our [website](https://www.genetex.com).