

CD62L antibody

Cat. No. GTX59778

Host	Rabbit
Clonality	Polyclonal
Isotype	IgG
Applications	WB, IP, IHC
Reactivity	Human, Mouse, Rat

References (1)

Package

100 µg

Applications

Application Note

*Optimal dilutions/concentrations should be determined by the researcher.

Suggested dilution	Recommended dilution
WB	0.5-4 µg/ml
IP	10-20 µg/ml
IHC	10-20 µg/ml

Not tested in other applications.

Calculated MW 42.19 kDa. ([Note](#))

Properties

Form	Liquid
Buffer	PBS, 30% Glycerol, 0.5% BSA
Preservative	0.01% Thimerosal
Storage	Store as concentrated solution. Centrifuge briefly prior to opening vial. For short-term storage (1-2 weeks), store at 4°C. For long-term storage, aliquot and store at -20°C or below. Avoid multiple freeze-thaw cycles.
Concentration	0.5 mg/ml (Please refer to the vial label for the specific concentration.)
Immunogen	Synthetic peptide surrounding amino acid 69 of human L-Selectin
Purification	Protein A purified
Conjugation	Unconjugated

Note

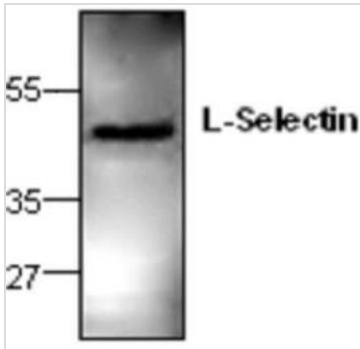
For laboratory research use only. Not for any clinical, therapeutic, or diagnostic use in humans or animals. Not for animal or human consumption.

Purchasers shall not, and agree not to enable third parties to, analyze, copy, reverse engineer or otherwise attempt to determine the structure or sequence of the product.



For full product information, images and publications, please visit our [website](#).

DATA IMAGES



GTX59778 WB Image

WB analysis of Jurkat cell lysate using GTX59778 CD62L antibody.



For full product information, images and publications, please visit our [website](#).