

FGF1 antibody

Cat. No. GTX59831

Host	Rabbit
Clonality	Polyclonal
Isotype	IgG
Applications	WB, Neutralizing/Inhibition
Reactivity	Human

Package
100 µg

Applications

Application Note

*Optimal dilutions/concentrations should be determined by the researcher.

Suggested dilution	Recommended dilution
WB	0.5-2 µg/ml
Neutralizing/Inhibition	3-6 µg/ml

Not tested in other applications.

Calculated MW 17 kDa. ([Note](#))

Properties

Form	Liquid
Buffer	PBS, 30% Glycerol
Preservative	0.01% Thimerosal
Storage	Store as concentrated solution. Centrifuge briefly prior to opening vial. For short-term storage (1-2 weeks), store at 4°C. For long-term storage, aliquot and store at -20°C or below. Avoid multiple freeze-thaw cycles.
Concentration	0.5 mg/ml (Please refer to the vial label for the specific concentration.)
Immunogen	E. coli expressed recombinant human FGF-1
Purification	Purified by affinity chromatography
Conjugation	Unconjugated

Note

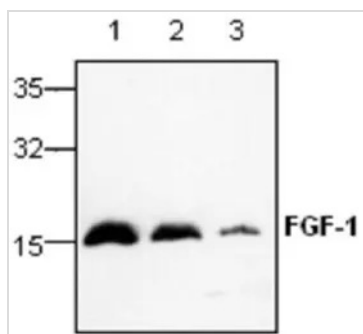
For laboratory research use only. Not for any clinical, therapeutic, or diagnostic use in humans or animals. Not for animal or human consumption.

Purchasers shall not, and agree not to enable third parties to, analyze, copy, reverse engineer or otherwise attempt to determine the structure or sequence of the product.



For full product information, images and publications, please visit our [website](#).

DATA IMAGES



GTX59831 WB Image

WB analysis of recombinant human FGF-1 protein using GTX59831 FGF1 antibody.

Lane1 : 1µg

Lane 2 : 250 ng

Lane 3 : 50 ng



For full product information, images and publications, please visit our [website](https://www.genetex.com).