

IL1 beta antibody

Cat. No. GTX59835

Host	Rabbit
Clonality	Polyclonal
Isotype	IgG
Applications	WB, Neutralizing /Inhibition
Reactivity	Human

Package
100 µg

Applications

Application Note

*Optimal dilutions/concentrations should be determined by the researcher.

Suggested dilution	Recommended dilution
WB	0.5-4 µg/ml
Neutralizing /Inhibition	Assay dependent

Not tested in other applications.

Calculated MW 31 kDa. ([Note](#))

Properties

Form	Liquid
Buffer	PBS, 0.5% BSA, 30% Glycerol
Preservative	0.01% Thimerosal
Storage	Store as concentrated solution. Centrifuge briefly prior to opening vial. For short-term storage (1-2 weeks), store at 4°C. For long-term storage, aliquot and store at -20°C or below. Avoid multiple freeze-thaw cycles.
Concentration	0.5 mg/ml (Please refer to the vial label for the specific concentration.)
Immunogen	E. coli expressed recombinant human IL-1β
Purification	Purified by affinity chromatography
Conjugation	Unconjugated

Note

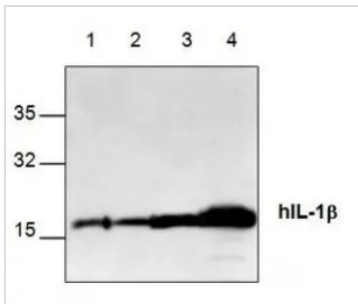
For laboratory research use only. Not for any clinical, therapeutic, or diagnostic use in humans or animals. Not for animal or human consumption.

Purchasers shall not, and agree not to enable third parties to, analyze, copy, reverse engineer or otherwise attempt to determine the structure or sequence of the product.



For full product information, images and publications, please visit our [website](#).

DATA IMAGES

**GTX59835 WB Image**

WB analysis of recombinant human IL-1 protein using GTX59835 IL1 beta antibody.

Lane 1 : 10 ng

Lane 2 : 50 ng

Lane 3 : 250 ng

Lane 4 : 1μg



For full product information, images and publications, please visit our [website](#).