

RFP (dsRed) antibody

Cat. No. GTX59862

Host	Rabbit
Clonality	Polyclonal
Isotype	IgG
Applications	WB, ICC/IF
Reactivity	Species independent

References (7)

Package

100 µg

Applications

Application Note

*Optimal dilutions/concentrations should be determined by the researcher.

Suggested dilution	Recommended dilution
WB	0.5-4 µg/ml
ICC/IF	Assay dependent

Not tested in other applications.

Product Note This antibody also reacts with mCherry.

Properties

Form	Liquid
Buffer	PBS pH7.2, 30% Glycerol, 0.5% BSA, 5mM EDTA
Preservative	0.3% ProClin
Storage	Store as concentrated solution. Centrifuge briefly prior to opening vial. For short-term storage (1-2 weeks), store at 4°C. For long-term storage, aliquot and store at -20°C or below. Avoid multiple freeze-thaw cycles.
Concentration	0.5 mg/ml (Please refer to the vial label for the specific concentration.)
Immunogen	Recombinant RFP expressed from E. coli
Purification	Purified by affinity chromatography
Conjugation	Unconjugated

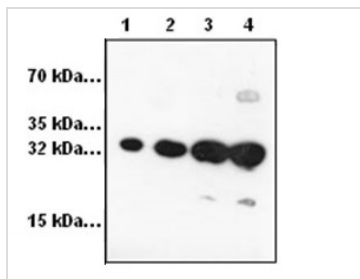
Note

For laboratory research use only. Not for any clinical, therapeutic, or diagnostic use in humans or animals. Not for animal or human consumption.

Purchasers shall not, and agree not to enable third parties to, analyze, copy, reverse engineer or otherwise attempt to determine the structure or sequence of the product.

For full product information, images and publications, please visit our [website](#).

DATA IMAGES

**GTX59862 WB Image**

WB analysis of recombinant RFP protein using GTX59862 RFP (dsRed) antibody.

Lane 1 : 10 ng

Lane 2 : 50 ng

Lane 3 : 250 ng

Lane 4 : 1 µg



For full product information, images and publications, please visit our [website](#).