

## RFP (dsRed) antibody

**Cat. No. GTX59862**

<b>Host</b>	Rabbit
<b>Clonality</b>	Polyclonal
<b>Isotype</b>	IgG
<b>Applications</b>	WB, ICC/IF
<b>Reactivity</b>	Species independent

References ( 7 )

Package

100 µg

## Applications

**Application Note**

\*Optimal dilutions/concentrations should be determined by the researcher.

Suggested dilution	Recommended dilution
WB	0.5-4 µg/ml
ICC/IF	Assay dependent

Not tested in other applications.

**Product Note** This antibody also reacts with mCherry.

## Properties

<b>Form</b>	Liquid
<b>Buffer</b>	PBS pH7.2, 30% Glycerol, 0.5% BSA, 5mM EDTA
<b>Preservative</b>	0.3% ProClin
<b>Storage</b>	Store as concentrated solution. Centrifuge briefly prior to opening vial. For short-term storage (1-2 weeks), store at 4°C. For long-term storage, aliquot and store at -20°C or below. Avoid multiple freeze-thaw cycles.
<b>Concentration</b>	0.5 mg/ml (Please refer to the vial label for the specific concentration.)
<b>Immunogen</b>	Recombinant RFP expressed from E. coli
<b>Purification</b>	Purified by affinity chromatography
<b>Conjugation</b>	Unconjugated

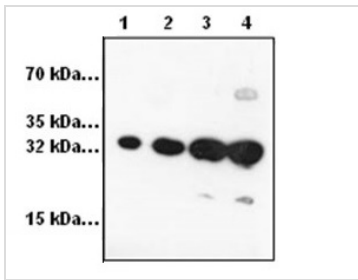
**Note**

For laboratory research use only. Not for any clinical, therapeutic, or diagnostic use in humans or animals. Not for animal or human consumption.

Purchasers shall not, and agree not to enable third parties to, analyze, copy, reverse engineer or otherwise attempt to determine the structure or sequence of the product.

For full product information, images and publications, please visit our [website](#).

## DATA IMAGES

**GTX59862 WB Image**

WB analysis of recombinant RFP protein using GTX59862 RFP (dsRed) antibody.

Lane 1 : 10 ng

Lane 2 : 50 ng

Lane 3 : 250 ng

Lane 4 : 1 µg



For full product information, images and publications, please visit our [website](#).