

SGLT2 antibody

Cat. No. GTX59872

Host	Rabbit
Clonality	Polyclonal
Isotype	IgG
Applications	WB, IHC-P
Reactivity	Human, Mouse, Rat

References (3)

Package

100 µg

Applications

Application Note

*Optimal dilutions/concentrations should be determined by the researcher.

Suggested dilution	Recommended dilution
WB	0.5-4 µg/ml
IHC-P	Assay dependent

Not tested in other applications.

Calculated MW 73 kDa. ([Note](#))

Properties

Form	Liquid
Buffer	PBS, 0.5% BSA, 30% Glycerol, 5mM EDTA
Preservative	0.03% ProClin
Storage	Store as concentrated solution. Centrifuge briefly prior to opening vial. For short-term storage (1-2 weeks), store at 4°C. For long-term storage, aliquot and store at -20°C or below. Avoid multiple freeze-thaw cycles.
Concentration	0.5 mg/ml (Please refer to the vial label for the specific concentration.)
Immunogen	Synthetic peptide near the N-terminus of mouse SGLT-2
Purification	Purified by affinity chromatography
Conjugation	Unconjugated

Note

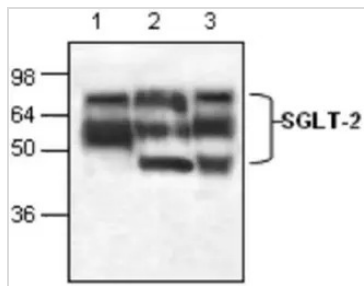
For laboratory research use only. Not for any clinical, therapeutic, or diagnostic use in humans or animals. Not for animal or human consumption.

Purchasers shall not, and agree not to enable third parties to, analyze, copy, reverse engineer or otherwise attempt to determine the structure or sequence of the product.



For full product information, images and publications, please visit our [website](#).

DATA IMAGES



GTX59872 WB Image

WB analysis of Jurkat cells (Lane 1), mouse small intestine (Lane 2) and rat kidney (Lane 3) lysates using GTX59872 SGLT2 antibody.



For full product information, images and publications, please visit our [website](https://www.genetex.com).