

Cyclin D2 antibody

Cat. No. GTX60131

Host	Rabbit
Clonality	Polyclonal
Isotype	IgG
Application	WB, ICC/IF, IHC-P
Reactivity	Human, Mouse, Rat

Package
100 µl

APPLICATION

Application Note

*Optimal dilutions/concentrations should be determined by the researcher.

Suggested dilution	Recommended dilution
WB	Assay dependent
ICC/IF	1:50-200
IHC-P	1:50-400

Not tested in other applications.

Calculated MW 33 kDa. ([Note](#))

PROPERTIES

Form	Liquid
Buffer	1% BSA, 50% Glycerol
Preservative	0.09% Sodium azide
Storage	Store as concentrated solution. Centrifuge briefly prior to opening vial. For short-term storage (1-2 weeks), store at 4°C. For long-term storage, aliquot and store at -20°C or below. Avoid multiple freeze-thaw cycles.
Concentration	1 mg/ml (Please refer to the vial label for the specific concentration.)
Immunogen	KLH conjugated synthetic peptide derived from human Cyclin D2(150-200).
Purification	Protein A purified
Conjugation	Unconjugated

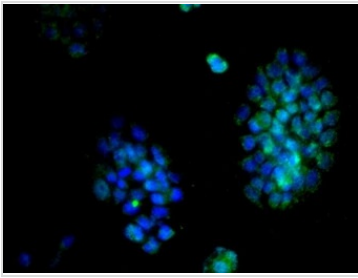
Note

For laboratory research use only. Not for any clinical, therapeutic, or diagnostic use in humans or animals. Not for animal or human consumption.

Purchasers shall not, and agree not to enable third parties to, analyze, copy, reverse engineer or otherwise attempt to determine the structure or sequence of the product.



For full product information, images and publications, please visit our [website](#).

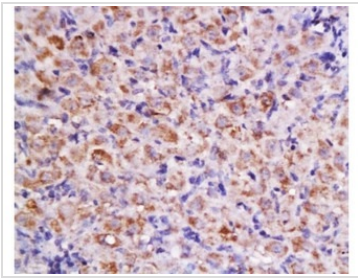
DATA IMAGES

GTX60131 ICC/IF Image

ICC/IF analysis of A431 cells using GTX60131 Cyclin D2 antibody.

Green : Primary antibody

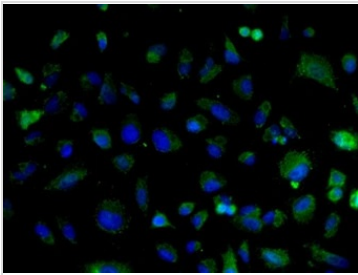
Blue : DAPI

Dilution : 1:200


GTX60131 IHC-P Image

IHC-P analysis of rat ovary tissue using GTX60131 Cyclin D2 antibody.

Dilution : 1:200

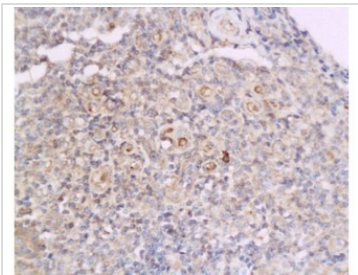

GTX60131 ICC/IF Image

ICC/IF analysis of A549 cells using GTX60131 Cyclin D2 antibody.

Green : Primary antibody

Blue : DAPI

Dilution : 1:50


GTX60131 IHC-P Image

IHC-P analysis of human flat moss tinea tissue using GTX60131 Cyclin D2 antibody.

Dilution : 1:200



For full product information, images and publications, please visit our [website](#).