

LIFR antibody

Cat. No. GTX60183

Host	Rabbit
Clonality	Polyclonal
Isotype	IgG
Applications	WB, IHC-P, IHC-Fr, FCM
Reactivity	Human

References (2)

Package

100 µl

Applications

Application Note

*Optimal dilutions/concentrations should be determined by the researcher.

Suggested dilution	Recommended dilution
WB	1:300-1000
IHC-P	1:50-400
IHC-Fr	Assay dependent
FCM	1:20-100

Not tested in other applications.

Calculated MW 122 kDa. ([Note](#))

Properties

Form	Liquid
Buffer	1% BSA, 50% Glycerol
Preservative	0.09% Sodium azide
Storage	Store as concentrated solution. Centrifuge briefly prior to opening vial. For short-term storage (1-2 weeks), store at 4°C. For long-term storage, aliquot and store at -20°C or below. Avoid multiple freeze-thaw cycles.
Concentration	1 mg/ml (Please refer to the vial label for the specific concentration.)
Immunogen	KLH conjugated synthetic peptide derived from rat LIFR(500-550).
Purification	Protein A purified
Conjugation	Unconjugated

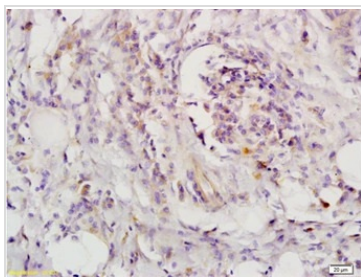
Note

For laboratory research use only. Not for any clinical, therapeutic, or diagnostic use in humans or animals. Not for animal or human consumption.

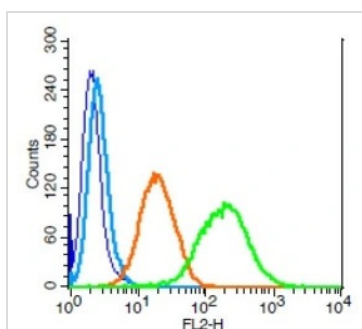
Purchasers shall not, and agree not to enable third parties to, analyze, copy, reverse engineer or otherwise attempt to determine the structure or sequence of the product.

For full product information, images and publications, please visit our [website](#).

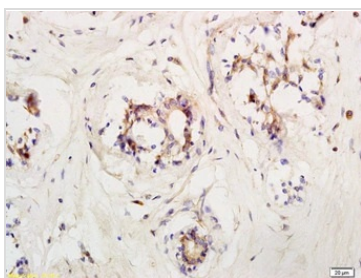
DATA IMAGES

**GTX60183 IHC-P Image**

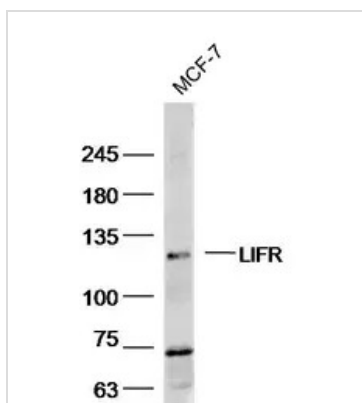
IHC-P analysis of human colon carcinoma tissue using GTX60183 LIFR antibody.
Dilution : 1:200

**GTX60183 FCM Image**

FACS analysis of U937 cells using GTX60183 LIFR antibody.
Green : Primary antibody
Blue : Unstained cells
Orange : Isotype control
Light blue : Secondary antibody only
Dilution : 1:100

**GTX60183 IHC-P Image**

IHC-P analysis of human breast cancer tissue using GTX60183 LIFR antibody.
Dilution : 1:200

**GTX60183 WB Image**

WB analysis of MCF-7 cell lysate using GTX60183 LIFR antibody.
Dilution : 1:300



For full product information, images and publications, please visit our [website](#).