

BTG1 antibody

Cat. No. GTX60192

Host	Rabbit
Clonality	Polyclonal
Isotype	IgG
Applications	IHC-P
Reactivity	Rat

Package
 100 µl

Applications
Application Note

*Optimal dilutions/concentrations should be determined by the researcher.

Suggested dilution	Recommended dilution
--------------------	----------------------

IHC-P	1:50-400
-------	----------

Not tested in other applications.

Product Note	The immunogen shares 100% homology with human BTG2.
---------------------	---

Properties

Form	Liquid
-------------	--------

Buffer	1% BSA, 50% Glycerol
---------------	----------------------

Preservative	0.09% Sodium azide
---------------------	--------------------

Storage	Store as concentrated solution. Centrifuge briefly prior to opening vial. For short-term storage (1-2 weeks), store at 4°C. For long-term storage, aliquot and store at -20°C or below. Avoid multiple freeze-thaw cycles.
----------------	--

Concentration	1 mg/ml (Please refer to the vial label for the specific concentration.)
----------------------	--

Immunogen	KLH conjugated synthetic peptide derived from human BTG1(35-75).
------------------	--

Purification	Protein A purified
---------------------	--------------------

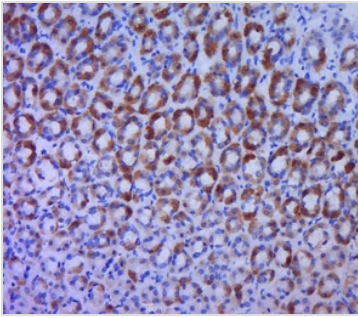
Conjugation	Unconjugated
--------------------	--------------

Note	For laboratory research use only. Not for any clinical, therapeutic, or diagnostic use in humans or animals. Not for animal or human consumption.
-------------	---

	Purchasers shall not, and agree not to enable third parties to, analyze, copy, reverse engineer or otherwise attempt to determine the structure or sequence of the product.
--	---


 For full product information, images and publications, please visit our [website](#).

DATA IMAGES

**GTX60192 IHC-P Image**

IHC-P analysis of rat stomach tissue using GTX60192 BTG1 antibody.

Antigen retrieval : Boiling in sodium citrate buffer (pH6) for 15min

Dilution : 1:400



For full product information, images and publications, please visit our [website](#).