

RHCG antibody

Cat. No. GTX60193

Host	Rabbit
Clonality	Polyclonal
Isotype	IgG
Applications	IHC-P, IHC-Fr, ELISA
Reactivity	Human, Mouse

References (1)

Package

100 µl

Applications

Application Note

*Optimal dilutions/concentrations should be determined by the researcher.

Suggested dilution	Recommended dilution
IHC-P	1:50-400
IHC-Fr	Assay dependent
ELISA	Assay dependent

Not tested in other applications.

Properties

Form	Liquid
Buffer	1% BSA, 50% Glycerol
Preservative	0.09% Sodium azide
Storage	Store as concentrated solution. Centrifuge briefly prior to opening vial. For short-term storage (1-2 weeks), store at 4°C. For long-term storage, aliquot and store at -20°C or below. Avoid multiple freeze-thaw cycles.
Concentration	1 mg/ml (Please refer to the vial label for the specific concentration.)
Immunogen	KLH conjugated synthetic peptide derived from human RHCG(30-71).
Purification	Protein A purified
Conjugation	Unconjugated

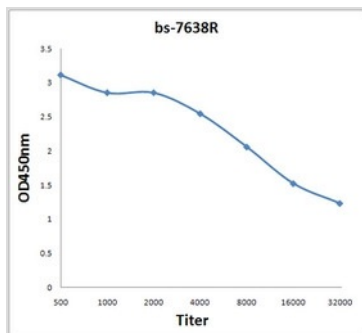
Note

For laboratory research use only. Not for any clinical, therapeutic, or diagnostic use in humans or animals. Not for animal or human consumption.

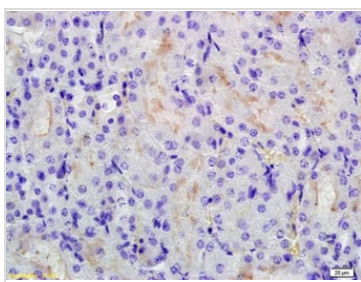
Purchasers shall not, and agree not to enable third parties to, analyze, copy, reverse engineer or otherwise attempt to determine the structure or sequence of the product.



For full product information, images and publications, please visit our [website](#).

DATA IMAGES

GTX60193 ELISA Image

ELISA analysis of 2µg GTX60193 anitgen in 100µl buffer using serial diluted GTX60193 RHCG antibody.


GTX60193 IHC-P Image

IHC-P analysis of mouse kidney tissue using GTX60193 RHCG antibody.

Dilution : 1:200



For full product information, images and publications, please visit our [website](#).