

S100A8 antibody

Cat. No. GTX60206

Host	Rabbit
Clonality	Polyclonal
Isotype	IgG
Applications	FCM, IHC
Reactivity	Human, Mouse

Package
100 µl

Applications

Application Note

*Optimal dilutions/concentrations should be determined by the researcher.

Suggested dilution	Recommended dilution
FCM	Assay dependent
IHC	Assay dependent

Not tested in other applications.

Properties

Form	Liquid
Buffer	1% BSA, 50% Glycerol
Preservative	0.09% Sodium azide
Storage	Store as concentrated solution. Centrifuge briefly prior to opening vial. For short-term storage (1-2 weeks), store at 4°C. For long-term storage, aliquot and store at -20°C or below. Avoid multiple freeze-thaw cycles.
Concentration	1 mg/ml (Please refer to the vial label for the specific concentration.)
Immunogen	KLH conjugated synthetic peptide derived from mouse S100A8(20-60).
Purification	Protein A purified
Conjugation	Unconjugated

Note

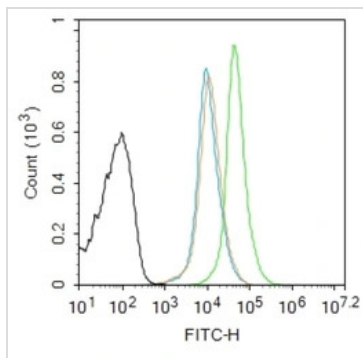
For laboratory research use only. Not for any clinical, therapeutic, or diagnostic use in humans or animals. Not for animal or human consumption.

Purchasers shall not, and agree not to enable third parties to, analyze, copy, reverse engineer or otherwise attempt to determine the structure or sequence of the product.



For full product information, images and publications, please visit our [website](#).

DATA IMAGES

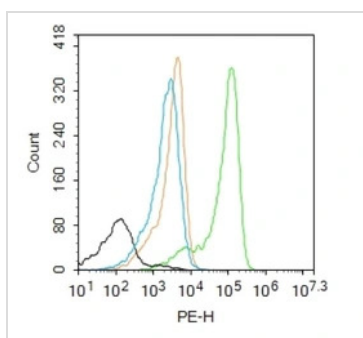


GTX60206 FCM Image

FACS analysis of 4% PFA-fixed mouse spleen cells using GTX60206 S100A8 antibody. Acquisitions of 20,000 events were performed. Cells stained with primary antibody (green), and isotype control (orange).

Permeabilization : 0.1% PBST for 20 min at room temperature

Dilution : 1:50 (orange).



GTX60206 FCM Image

FACS analysis of 4% PFA-fixed K562 cells using GTX60206 S100A8 antibody. Acquisitions of 20,000 events were performed. Cells stained with primary antibody (green), and isotype control (orange).

Permeabilization : 0.1% PBST for 20 min at room temperature

Dilution : 1:50 (orange).



For full product information, images and publications, please visit our [website](#).