

## Alpha fetoprotein / AFP antibody [A2]

**Cat. No. GTX60214**

<b>Host</b>	Mouse
<b>Clonality</b>	Monoclonal
<b>Isotype</b>	IgG
<b>Applications</b>	WB, IHC-P, ELISA
<b>Reactivity</b>	Human, Rat

**Package**  
100 µl

## Applications

**Application Note**

\*Optimal dilutions/concentrations should be determined by the researcher.

Suggested dilution	Recommended dilution
WB	1:300-1000
IHC-P	1:50-400
ELISA	Assay dependent

Not tested in other applications.

**Calculated MW** 69 kDa. ([Note](#))

## Properties

<b>Form</b>	Liquid
<b>Buffer</b>	1% BSA, 50% Glycerol
<b>Preservative</b>	0.09% Sodium azide
<b>Storage</b>	Store as concentrated solution. Centrifuge briefly prior to opening vial. For short-term storage (1-2 weeks), store at 4°C. For long-term storage, aliquot and store at -20°C or below. Avoid multiple freeze-thaw cycles.
<b>Concentration</b>	1 mg/ml (Please refer to the vial label for the specific concentration.)
<b>Immunogen</b>	Full length human alpha fetoprotein / AFP
<b>Purification</b>	Protein G purified
<b>Conjugation</b>	Unconjugated

**Note**

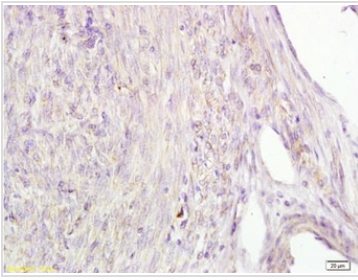
For laboratory research use only. Not for any clinical, therapeutic, or diagnostic use in humans or animals. Not for animal or human consumption.

Purchasers shall not, and agree not to enable third parties to, analyze, copy, reverse engineer or otherwise attempt to determine the structure or sequence of the product.

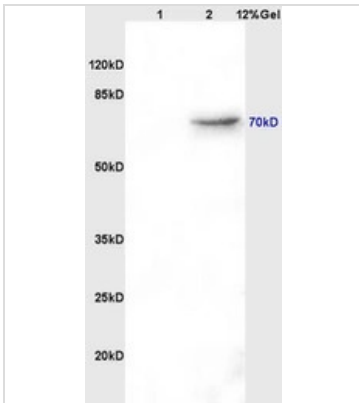


For full product information, images and publications, please visit our [website](#).

## DATA IMAGES

**GTX60214 IHC-P Image**

IHC-P analysis of human cervical carcinoma tissue using GTX60214 Alpha fetoprotein / AFP antibody [A2].  
Dilution : 1:100

**GTX60214 WB Image**

WB analysis of various samples using GTX60214 Alpha fetoprotein / AFP antibody [A2].  
Dilution : 1:200  
Lane 1 : rat brain lysates  
Lane 2 : rat kidney lysates



For full product information, images and publications, please visit our [website](#).