

## Fetuin A antibody

Cat. No. GTX60278

Host	Rabbit
Clonality	Polyclonal
Isotype	IgG
Applications	WB, IHC-P, ELISA
Reactivity	Human, Mouse, Rat

Package  
100 µl

## Applications

## Application Note

\*Optimal dilutions/concentrations should be determined by the researcher.

Suggested dilution	Recommended dilution
WB	1:300-1000
IHC-P	1:50-400
ELISA	Assay dependent

Not tested in other applications.

Calculated MW 39 kDa. ([Note](#))

## Properties

Form	Liquid
Buffer	1% BSA, 50% Glycerol
Preservative	0.09% Sodium azide
Storage	Store as concentrated solution. Centrifuge briefly prior to opening vial. For short-term storage (1-2 weeks), store at 4°C. For long-term storage, aliquot and store at -20°C or below. Avoid multiple freeze-thaw cycles.
Concentration	1 mg/ml (Please refer to the vial label for the specific concentration.)
Immunogen	KLH conjugated synthetic peptide derived from human Fetuin A(200-240).
Purification	Protein A purified
Conjugation	Unconjugated

## Note

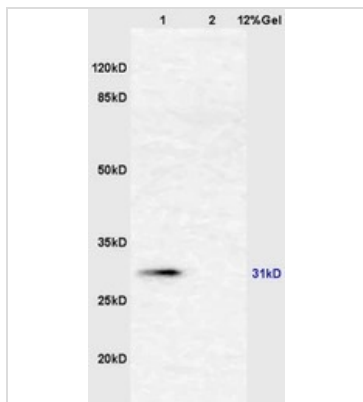
For laboratory research use only. Not for any clinical, therapeutic, or diagnostic use in humans or animals. Not for animal or human consumption.

Purchasers shall not, and agree not to enable third parties to, analyze, copy, reverse engineer or otherwise attempt to determine the structure or sequence of the product.



For full product information, images and publications, please visit our [website](#).

DATA IMAGES



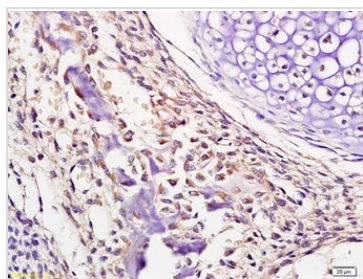
**GTX60278 WB Image**

WB analysis of various samples using GTX60278 Fetuin A antibody.

Dilution : 1:200

Lane 1 : mouse liver lysates

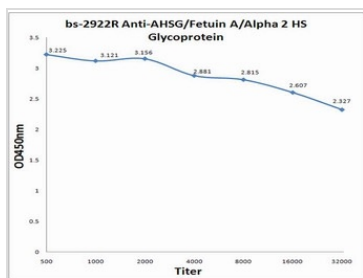
Lane 2 : mouse intestine lysates



**GTX60278 IHC-P Image**

IHC-P analysis of mouse embryo tissue using GTX60278 Fetuin A antibody.

Dilution : 1:200



**GTX60278 ELISA Image**

ELISA analysis of 0.2µg GTX60278 antigen in 100µl buffer using serial diluted GTX60278 Fetuin A antibody.



For full product information, images and publications, please visit our [website](#).