

## CD36 antibody

Cat. No. GTX60300

Host	Rabbit
Clonality	Polyclonal
Isotype	IgG
Applications	WB, IHC-P, FCM
Reactivity	Mouse, Rat

Package  
100 µl

## Applications

## Application Note

\*Optimal dilutions/concentrations should be determined by the researcher.

Suggested dilution	Recommended dilution
WB	1:300-1000
IHC-P	1:50-400
FCM	1:20-100

Not tested in other applications.

Calculated MW 53 kDa. ( [Note](#) )

## Properties

Form	Liquid
Buffer	1% BSA, 50% Glycerol
Preservative	0.09% Sodium azide
Storage	Store as concentrated solution. Centrifuge briefly prior to opening vial. For short-term storage (1-2 weeks), store at 4°C. For long-term storage, aliquot and store at -20°C or below. Avoid multiple freeze-thaw cycles.
Concentration	1 mg/ml (Please refer to the vial label for the specific concentration.)
Immunogen	KLH conjugated synthetic peptide derived from mouse CD36(50-100).
Purification	Protein A purified
Conjugation	Unconjugated

## Note

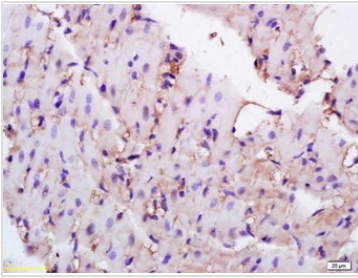
For laboratory research use only. Not for any clinical, therapeutic, or diagnostic use in humans or animals. Not for animal or human consumption.

Purchasers shall not, and agree not to enable third parties to, analyze, copy, reverse engineer or otherwise attempt to determine the structure or sequence of the product.



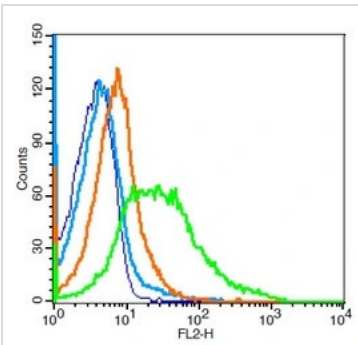
For full product information, images and publications, please visit our [website](#).

## DATA IMAGES



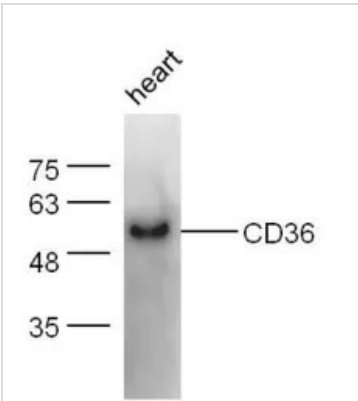
### GTX60300 IHC-P Image

IHC-P analysis of rat heart tissue using GTX60300 CD36 antibody.  
Dilution : 1:200



### GTX60300 FCM Image

FACS analysis of mouse spleen cells using GTX60300 CD36 antibody.  
Green : Primary antibody  
Blue : Unstained cells  
Orange : Isotype control  
Light blue : Secondary antibody only



### GTX60300 WB Image

WB analysis of mouse heart lysate using GTX60300 CD36 antibody.  
Dilution : 1:300



For full product information, images and publications, please visit our [website](https://www.genetex.com).