

ST2 antibody

Cat. No. GTX60302

Host	Rabbit
Clonality	Polyclonal
Isotype	IgG
Applications	WB, IHC-P, FCM
Reactivity	Human, Mouse, Rat

Package
100 µl

Applications

Application Note

*Optimal dilutions/concentrations should be determined by the researcher.

Suggested dilution	Recommended dilution
WB	Assay dependent
IHC-P	1:200-400
FCM	1:20-100

Not tested in other applications.

Calculated MW 63 kDa. ([Note](#))

Properties

Form	Liquid
Buffer	1% BSA, 50% Glycerol
Preservative	0.09% Sodium azide
Storage	Store as concentrated solution. Centrifuge briefly prior to opening vial. For short-term storage (1-2 weeks), store at 4°C. For long-term storage, aliquot and store at -20°C or below. Avoid multiple freeze-thaw cycles.
Concentration	1 mg/ml (Please refer to the vial label for the specific concentration.)
Immunogen	KLH conjugated synthetic peptide derived from human ST2(19-36).
Purification	Protein A purified
Conjugation	Unconjugated

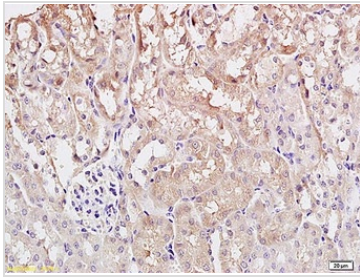
Note

For laboratory research use only. Not for any clinical, therapeutic, or diagnostic use in humans or animals. Not for animal or human consumption.

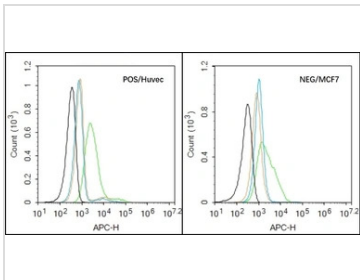
Purchasers shall not, and agree not to enable third parties to, analyze, copy, reverse engineer or otherwise attempt to determine the structure or sequence of the product.



For full product information, images and publications, please visit our [website](#).

DATA IMAGES

GTX60302 IHC-P Image

IHC-P analysis of rat kidney tissue using GTX60302 ST2 antibody.
Dilution : 1:200


GTX60302 FCM Image

FACS analysis of HUVEC (Positive) and MCF7 (Negative control) cells using GTX60302 ST2 antibody.

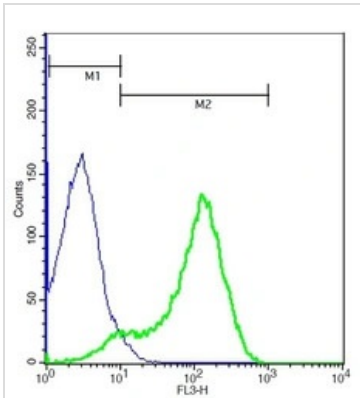
Green : Primary antibody

Black : Unstained cells

Orange : Isotype control

Blue : Secondary antibody only

Dilution : 1:50


GTX60302 FCM Image

FACS analysis of mouse splenocytes using GTX60302 ST2 antibody.

Green : Primary antibody

Blue : Unstained cells

Dilution : 1:50



For full product information, images and publications, please visit our [website](https://www.genetex.com).