

Histone H3K9me3S10ph (Tri-methyl Lys9/phospho Ser10) antibody - ChIP grade

Cat. No. GTX60327

Host	Rabbit
Clonality	Polyclonal
Isotype	IgG
Applications	WB, ICC/IF, Dot, ELISA, ChIP assay
Reactivity	Human

Package

50 µl

Applications

Application Note

*Optimal dilutions/concentrations should be determined by the researcher.

Suggested dilution	Recommended dilution
WB	1:500
ICC/IF	1:500
Dot	1:1000
ELISA	1:1,000 - 1:10,000
ChIP assay	5 µl

Not tested in other applications.

Properties

Form	Liquid
Buffer	PBS
Preservative	0.05% Sodium azide, 0.05% ProClin 300
Storage	Store as concentrated solution. Centrifuge briefly prior to opening vial. For short-term storage (1-2 weeks), store at 4°C. For long-term storage, aliquot and store at -20°C or below. Avoid multiple freeze-thaw cycles.
Immunogen	Histone H3 containing trimethylated lysine 9 and the phosphorylated serine 10 (H3K9me3S10p), using a KLH-conjugated synthetic peptide.
Purification	Unpurified
Conjugation	Unconjugated

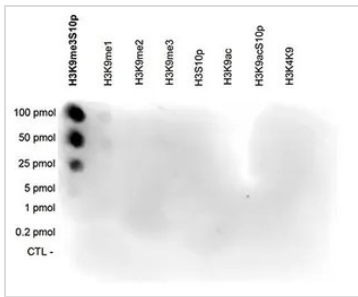
Note

For laboratory research use only. Not for any clinical, therapeutic, or diagnostic use in humans or animals. Not for animal or human consumption.

Purchasers shall not, and agree not to enable third parties to, analyze, copy, reverse engineer or otherwise attempt to determine the structure or sequence of the product.

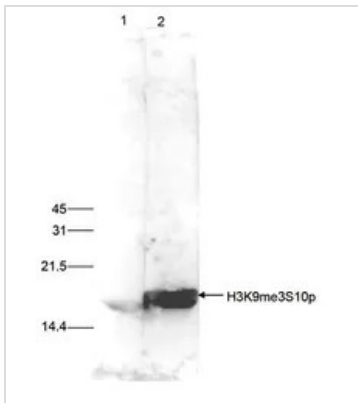


For full product information, images and publications, please visit our [website](#).

DATA IMAGES

GTX60327 Dot Image

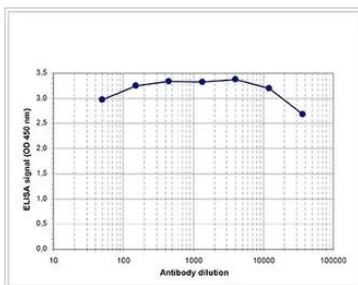
Dot blot analysis of 0.2 - 100 pmol of the peptides containing other modifications and unmodified sequences of histone H3 using GTX60327 Histone H3K9me3S10p (Tri-methyl Lys9/phospho Ser10) antibody - ChIP grade.

Dilution : 1:1,000

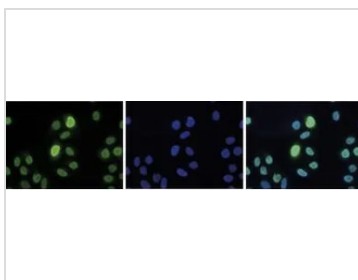

GTX60327 WB Image

WB analysis of 15 µg of histone extracts of HeLa cells treated with colcemid (to block the cell cycle in metaphase) using GTX60327 Histone H3K9me3S10p (Tri-methyl Lys9/phospho Ser10) antibody - ChIP grade.

Dilution : 1:500


GTX60327 ELISA Image

ELISA analysis of peptide containing the histone modification of interest using GTX60327 Histone H3K9me3S10p (Tri-methyl Lys9/phospho Ser10) antibody - ChIP grade.


GTX60327 ICC/IF Image

ICC/IF analysis of 4% paraformaldehyde fixed HeLa cells using GTX60327 Histone H3K9me3S10p (Tri-methyl Lys9/phospho Ser10) antibody - ChIP grade.

Green : Primary antibody

Blue : DAPI

Dilution : 1:500



For full product information, images and publications, please visit our [website](https://www.genetex.com).