

Histone H3K9acS10ph (Acetyl Lys9/phospho Ser10) antibody

Cat. No. GTX60328

Host	Rabbit
Clonality	Polyclonal
Isotype	IgG
Applications	WB, ICC/IF, Dot, ELISA, ChIP assay
Reactivity	Human

Package

50 µl

Applications

Application Note

*Optimal dilutions/concentrations should be determined by the researcher.

Suggested dilution	Recommended dilution
WB	1:250
ICC/IF	1:500
Dot	1:20,000
ELISA	1:1,000 - 1:4,000
ChIP assay	15 µl

Not tested in other applications.

Properties

Form	Liquid
Buffer	Serum
Preservative	0.05% Sodium azide
Storage	Store as concentrated solution. Centrifuge briefly prior to opening vial. For short-term storage (1-2 weeks), store at 4°C. For long-term storage, aliquot and store at -20°C or below. Avoid multiple freeze-thaw cycles.
Immunogen	Histone H3 containing the acetylated lysine 9 and the phosphorylated serine 10 (H3K9acS10p), using a KLH-conjugated synthetic peptide.
Purification	Unpurified
Conjugation	Unconjugated

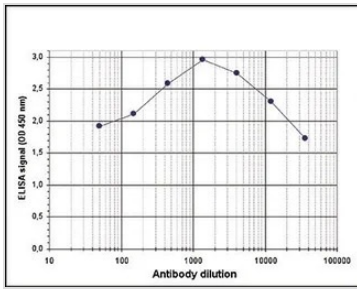
Note

For laboratory research use only. Not for any clinical, therapeutic, or diagnostic use in humans or animals. Not for animal or human consumption.

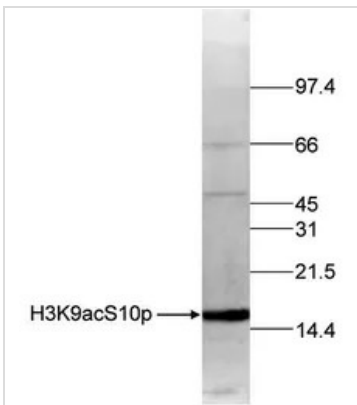
Purchasers shall not, and agree not to enable third parties to, analyze, copy, reverse engineer or otherwise attempt to determine the structure or sequence of the product.



For full product information, images and publications, please visit our [website](#).

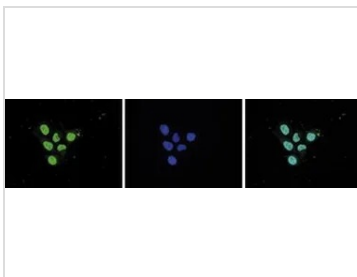
DATA IMAGES

GTx60328 ELISA Image

ELISA analysis of peptide containing the histone modifications of interest using GTx60328 Histone H3K9acS10ph (Acetyl Lys9/phospho Ser10) antibody.

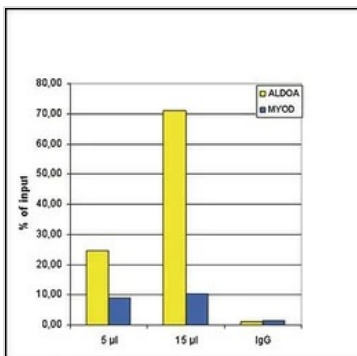

GTx60328 WB Image

WB analysis of histone extracts (15 µg) from HeLa cells using GTx60328 Histone H3K9acS10ph (Acetyl Lys9/phospho Ser10) antibody.

Dilution : 1:250


GTx60328 ICC/IF Image

ICC/IF analysis of HeLa cells using GTx60328 Histone H3K9acS10ph (Acetyl Lys9/phospho Ser10) antibody.


GTx60328 ChIP assay Image

ChIP analysis of sheared chromatin from 1.5×10^6 U2OS cells using GTx60328 Histone H3K9acS10ph (Acetyl Lys9/phospho Ser10) antibody. A titration of the antibody consisting of 5 and 15 µl per ChIP experiment was analysed. IgG (5 µg/IP) was used as negative IP control. QPCR was performed with primers for the ALDOA (fructose-bisphosphate aldolase A) promoter and for the coding region of the myogenic differentiation gene (MYOD), a gene that is inactive at normal conditions. This figure shows the recovery, expressed as a % of input (the relative amount of immunoprecipitated DNA compared to input DNA after qPCR analysis).



For full product information, images and publications, please visit our [website](https://www.genetex.com).