

# Histone H3K27me3S28ph (Tri-methyl Lys27/phospho Ser28) antibody - ChIP grade

**Cat. No. GTX60329**

<b>Host</b>	Rabbit
<b>Clonality</b>	Polyclonal
<b>Isotype</b>	IgG
<b>Applications</b>	WB, ICC/IF, IP, Dot, ELISA, ChIP assay
<b>Reactivity</b>	Human

Package

50 µl

## Applications

### Application Note

\*Optimal dilutions/concentrations should be determined by the researcher.

Suggested dilution	Recommended dilution
WB	1:250 - 1:500
ICC/IF	1:200
IP	5 µl
Dot	1:20,000
ELISA	1:100 - 1:500
ChIP assay	1 µl

Not tested in other applications.

## Properties

<b>Form</b>	Liquid
<b>Buffer</b>	Serum
<b>Preservative</b>	0.05% Sodium azide
<b>Storage</b>	Store as concentrated solution. Centrifuge briefly prior to opening vial. For short-term storage (1-2 weeks), store at 4°C. For long-term storage, aliquot and store at -20°C or below. Avoid multiple freeze-thaw cycles.
<b>Immunogen</b>	Histone H3 containing the trimethylated lysine 27 and the phosphorylated serine 28 (H3K27me3S28p), using a KLH-conjugated synthetic peptide.
<b>Purification</b>	Unpurified
<b>Conjugation</b>	Unconjugated

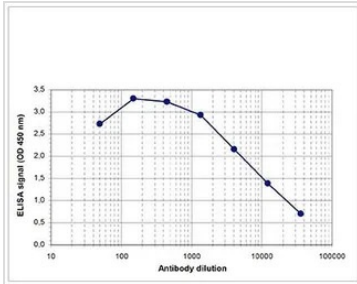


For full product information, images and publications, please visit our [website](#).

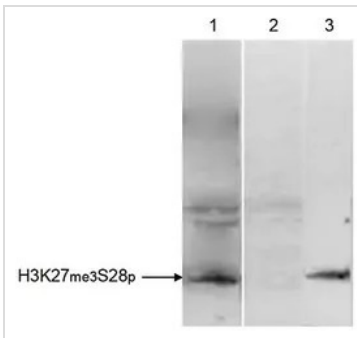
For laboratory research use only. Not for any clinical, therapeutic, or diagnostic use in humans or animals. Not for animal or human consumption.

**Note**

Purchasers shall not, and agree not to enable third parties to, analyze, copy, reverse engineer or otherwise attempt to determine the structure or sequence of the product.

**DATA IMAGES**

**GTx60329 ELISA Image**

ELISA analysis of peptide containing the histone modifications of interest using GTx60329 Histone H3K27me3S28ph (Tri-methyl Lys27/phospho Ser28) antibody - ChIP grade.


**GTx60329 IP Image**

IP analysis of HeLa cells were treated with colcemid (to block the cell cycle in metaphase) using GTx60329 Histone H3K27me3S28ph (Tri-methyl Lys27/phospho Ser28) antibody - ChIP grade.

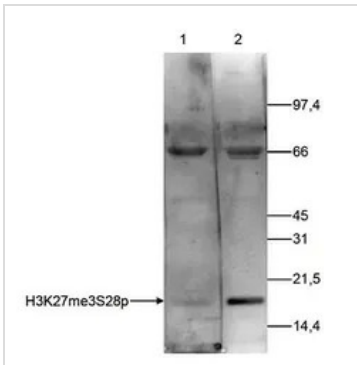
IP reaction : 5 µl antibody / 1x10<sup>4</sup> cells

Lane 1 : Primary antibody

Lane 2 : No antibody control

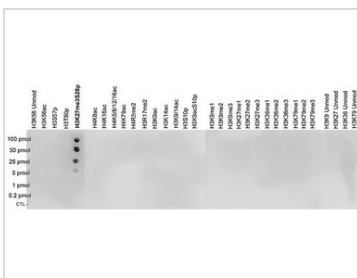
Lane 3 : Input

Dilution : 1:500


**GTx60329 WB Image**

WB analysis of histone extracts (15 µg) from HeLa cells using GTx60329 Histone H3K27me3S28ph (Tri-methyl Lys27/phospho Ser28) antibody - ChIP grade.

Dilution : 1:250


**GTx60329 Dot Image**

Dot blot analysis of 0.2 - 100 pmol of the peptides containing other modifications of histone H3 and H4 and unmodified sequences from histone H3 using GTx60329 Histone H3K27me3S28ph (Tri-methyl Lys27/phospho Ser28) antibody - ChIP grade.

Dilution : 1:20,000



For full product information, images and publications, please visit our [website](https://www.genetex.com).