

ETO / RUNX1T1 antibody - ChIP grade

Cat. No. GTX60332

Host	Rabbit
Clonality	Polyclonal
Isotype	IgG
Applications	ELISA, ChIP assay
Reactivity	Human

Package

50 µl

Applications

Application Note

*Optimal dilutions/concentrations should be determined by the researcher.

Suggested dilution	Recommended dilution
ELISA	1:100
ChIP assay	1-10 µl

Not tested in other applications.

Properties

Form	Liquid
Buffer	Serum
Preservative	0.05% Sodium azide
Storage	Store as concentrated solution. Centrifuge briefly prior to opening vial. For short-term storage (1-2 weeks), store at 4°C. For long-term storage, aliquot and store at -20°C or below. Avoid multiple freeze-thaw cycles.
Immunogen	Human ETO (runt-related transcription factor 1; translocated to, 1 (cyclin D-related)) using two KLH-conjugated synthetic peptides containing sequences from the N-terminal and the central region of the protein, respectively.
Purification	Unpurified
Conjugation	Unconjugated

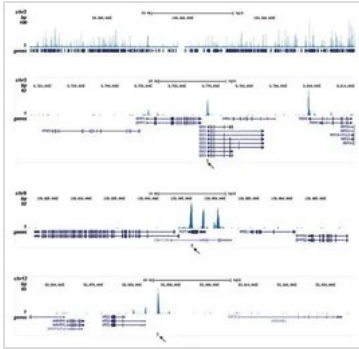
Note

For laboratory research use only. Not for any clinical, therapeutic, or diagnostic use in humans or animals. Not for animal or human consumption.

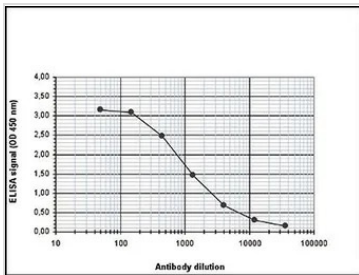
Purchasers shall not, and agree not to enable third parties to, analyze, copy, reverse engineer or otherwise attempt to determine the structure or sequence of the product.



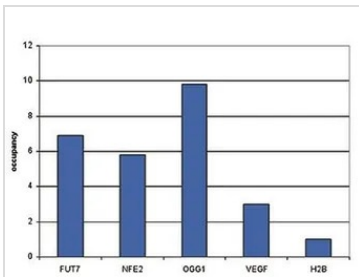
For full product information, images and publications, please visit our [website](#).

DATA IMAGES

GTX60332 ChIP assay Image

ChIP analysis of SKNO-1 cells using GTX60332 ETO / RUNX1T1 antibody - ChIP grade. The IP'd DNA of 6 ChIP's was pooled and analysed with an Illumina Genome Analyzer. Library preparation, cluster generation and sequencing were performed according to the manufacturer's instructions. The 32 bp tags were aligned to the human reference genome (hg18) using the ELAND algorithm. Figure 2 shows the results of the complete chromosome 3 and three genomic regions surrounding the OGG1, FUT7 and NFE2 genes, respectively. The position of the PCR amplicon is indicated with an arrow.


GTX60332 ELISA Image

ELISA analysis of peptides used for immunization using GTX60332 ETO / RUNX1T1 antibody - ChIP grade.


GTX60332 ChIP assay Image

ChIP analysis of sheared chromatin from 1.25×10^6 SKNO-1 cells using GTX60332 ETO / RUNX1T1 antibody - ChIP grade. QPCR was performed using primers specific for the FUT7, NFE2, OGG1 and VEGF genes. This figure shows the occupancy, calculated as the ratio + control/background for which the H2B gene was used. Antibody amount : 4 μ l



For full product information, images and publications, please visit our [website](http://www.genetex.com).