

Histone H3K79me3 (Tri-methyl Lys79) antibody - ChIP grade

Cat. No. GTX60336

Host	Rabbit
Clonality	Polyclonal
Isotype	IgG
Applications	WB, Dot, ELISA, ChIP assay
Reactivity	Human, Mouse

Package

50 µg

Applications

Application Note

*Optimal dilutions/concentrations should be determined by the researcher.

Suggested dilution	Recommended dilution
WB	1:1,000
Dot	1:100,000
ELISA	1:500
ChIP assay	1-5 µg

Not tested in other applications.

Properties

Form	Liquid
Buffer	PBS
Preservative	0.05% Sodium azide, 0.05% ProClin 300
Storage	Store as concentrated solution. Centrifuge briefly prior to opening vial. For short-term storage (1-2 weeks), store at 4°C. For long-term storage, aliquot and store at -20°C or below. Avoid multiple freeze-thaw cycles.
Concentration	0.6 mg/ml (Please refer to the vial label for the specific concentration.)
Immunogen	Histone H3 containing the trimethylated lysine 79 (H3K79me3), using a KLH-conjugated synthetic peptide.
Purification	Purified by affinity chromatography
Conjugation	Unconjugated

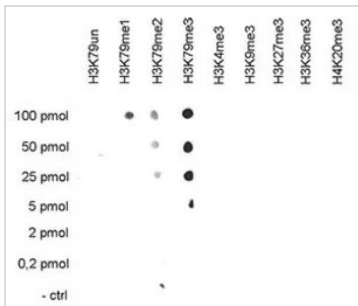
Note

For laboratory research use only. Not for any clinical, therapeutic, or diagnostic use in humans or animals. Not for animal or human consumption.

Purchasers shall not, and agree not to enable third parties to, analyze, copy, reverse engineer or otherwise attempt to determine the structure or sequence of the product.

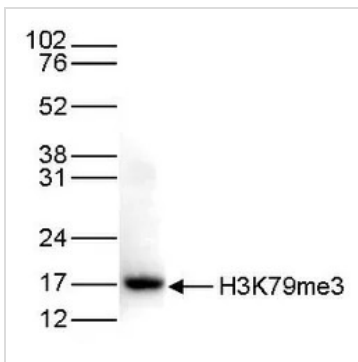


For full product information, images and publications, please visit our [website](#).

DATA IMAGES

GTX60336 Dot Image

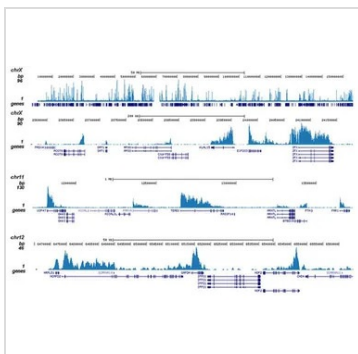
Dot blot analysis of 0.2 - 100 pmol of the peptides containing other histone modifications and the unmodified H3K79 using GTX60336 Histone H3K79me3 (Tri-methyl Lys79) antibody - ChIP grade.

Dilution : 1:100,000


GTX60336 WB Image

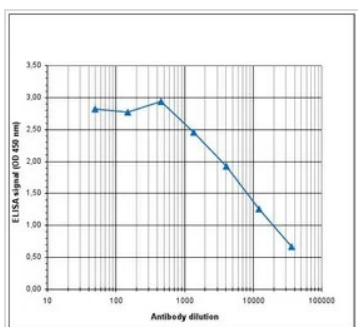
WB analysis of histone extracts (15 µg) from HeLa cells using GTX60336 Histone H3K79me3 (Tri-methyl Lys79) antibody - ChIP grade.

Dilution : 1:1,000


GTX60336 ChIP assay Image

ChIP analysis of sheared chromatin from 10^6 HeLaS3 cells using GTX60336 Histone H3K79me3 (Tri-methyl Lys79) antibody - ChIP grade. The IP'd DNA was analysed on an Illumina Genome Analyzer. Library preparation, cluster generation and sequencing were performed according to the manufacturer's instructions. The 36 bp tags were aligned to the human genome using the ELAND algorithm. Figure 2 shows the peak distribution along the complete sequence and a 600 kb region of the X-chromosome (figure 2A and B), in a 2 Mb region from chromosome 11 (figure 2C), and in a 100 kb region surrounding the GAPDH positive control gene (figure 2D).

Antibody amount : 1 µg


GTX60336 ELISA Image

ELISA analysis of peptide containing the histone modification of interest using GTX60336 Histone H3K79me3 (Tri-methyl Lys79) antibody - ChIP grade.



For full product information, images and publications, please visit our [website](http://www.genetex.com).