

## Retinoic Acid Receptor alpha antibody - ChIP grade

Cat. No. GTX60338

Host	Rabbit
Clonality	Polyclonal
Isotype	IgG
Applications	WB, ELISA, ChIP assay
Reactivity	Human, Mouse

## Package

50 µl

## Applications

## Application Note

\*Optimal dilutions/concentrations should be determined by the researcher.

Suggested dilution	Recommended dilution
WB	1:750
ELISA	1:50
ChIP assay	1-10 µl

Not tested in other applications.

Calculated MW 51 kDa. ( [Note](#) )

## Properties

Form	Liquid
Buffer	Serum
Preservative	0.05% Sodium azide
Storage	Store as concentrated solution. Centrifuge briefly prior to opening vial. For short-term storage (1-2 weeks), store at 4°C. For long-term storage, aliquot and store at -20°C or below. Avoid multiple freeze-thaw cycles.
Immunogen	Human RARA (Retinoic Acid Receptor alpha) using two KLH-conjugated synthetic peptides containing sequences from the C-terminal region of the protein.
Purification	Unpurified
Conjugation	Unconjugated

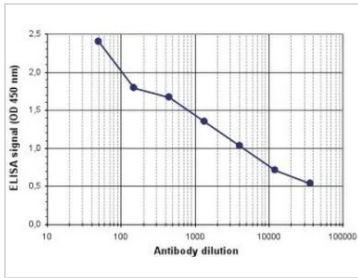
## Note

For laboratory research use only. Not for any clinical, therapeutic, or diagnostic use in humans or animals. Not for animal or human consumption.

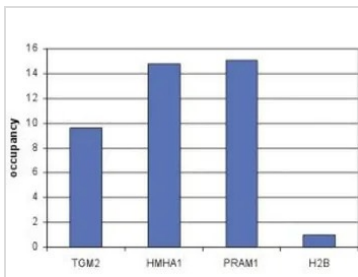
Purchasers shall not, and agree not to enable third parties to, analyze, copy, reverse engineer or otherwise attempt to determine the structure or sequence of the product.



For full product information, images and publications, please visit our [website](#).

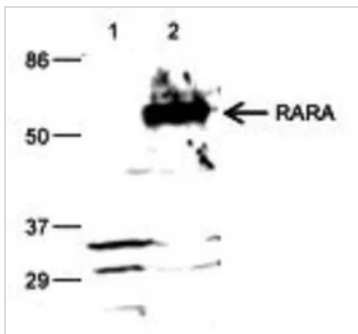
**DATA IMAGES**

**GTx60338 ELISA Image**

ELISA analysis of peptides used for immunization using GTx60338 Retinoic Acid Receptor alpha antibody - ChIP grade.


**GTx60338 ChIP assay Image**

ChIP analysis of sheared chromatin from  $6 \times 10^6$  NB4 cells using GTx60338 Retinoic Acid Receptor alpha antibody - ChIP grade. QPCR was performed using primers specific for the TGM2, HMHA1, PRAM1 and H2B genes. This figure shows the relative occupancy, calculated as the ratio + control/background for which the second exon of the MB gene was used.

Antibody amount : 4 $\mu$ l


**GTx60338 WB Image**

WB analysis of 293T transfected with a RARA construct (lane 2) or with a negative control construct (lane 1) using GTx60338 Retinoic Acid Receptor alpha antibody - ChIP grade.

Dilution : 1:750



For full product information, images and publications, please visit our [website](https://www.genetex.com).