

Histone H4 antibody - ChIP grade

Cat. No. GTX60345

Host	Rabbit
Clonality	Polyclonal
Isotype	IgG
Application	WB, ICC/IF, ELISA, ChIP assay
Reactivity	Human

Package
50 µg

APPLICATION

Application Note

*Optimal dilutions/concentrations should be determined by the researcher.

Suggested dilution	Recommended dilution
WB	Assay dependent
ICC/IF	Assay dependent
ELISA	Assay dependent
ChIP assay	Assay dependent

Not tested in other applications.

PROPERTIES

Form	Liquid
Buffer	PBS
Preservative	0.05% Sodium azide, 0.05% ProClin 300
Storage	Store as concentrated solution. Centrifuge briefly prior to opening vial. For short-term storage (1-2 weeks), store at 4°C. For long-term storage, aliquot and store at -20°C or below. Avoid multiple freeze-thaw cycles.
Concentration	1.3 mg/ml (Please refer to the vial label for the specific concentration.)
Immunogen	Histone H4 using a KLH-conjugated synthetic peptide containing an unmodified sequence from the central part of the protein.
Purification	Purified by affinity chromatography
Conjugation	Unconjugated

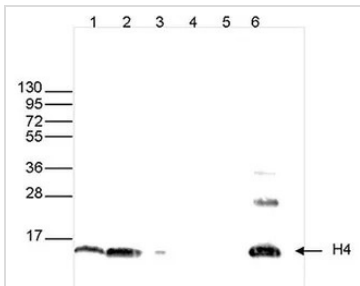
Note

For laboratory research use only. Not for any clinical, therapeutic, or diagnostic use in humans or animals. Not for animal or human consumption.

Purchasers shall not, and agree not to enable third parties to, analyze, copy, reverse engineer or otherwise attempt to determine the structure or sequence of the product.

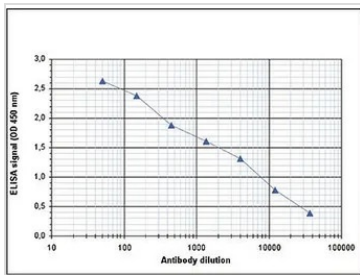


For full product information, images and publications, please visit our [website](#).

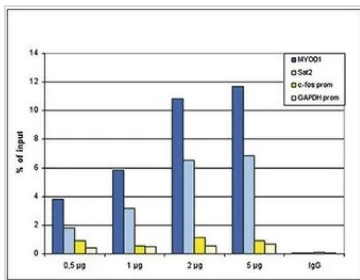
DATA IMAGES

GTX60345 WB Image

WB analysis of whole cell extracts (25 µg, lane 1) and histone extracts (15 µg, lane 2) from HeLa cells, and on 1 µg of recombinant histone H2A, H2B, H3 and H4 (lane 3, 4, 5 and 6, respectively) using GTX60345 Histone H4 antibody - ChIP grade.

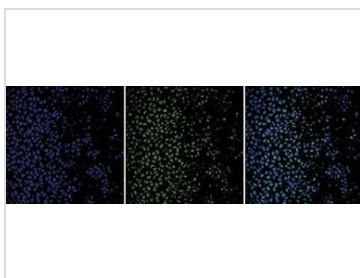
Dilution : 1:1,000


GTX60345 ELISA Image

ELISA analysis of peptides used for immunization using GTX60345 Histone H4 antibody - ChIP grade.


GTX60345 ChIP assay Image

ChIP analysis of sheared chromatin from 10^6 HeLa cells using GTX60345 Histone H4 antibody - ChIP grade. A titration consisting of 0.5, 1, 2 and 5 µg of antibody per ChIP experiment was analyzed. IgG (1 µg/IP) was used as a negative IP control. Quantitative PCR was performed with primers specific for the promoters of the active GAPDH and c-fos genes, and for the inactive MYOD1 gene and the Sat2 satellite repeat. This figure shows the recovery, expressed as a % of input (the relative amount of immunoprecipitated DNA compared to input DNA after qPCR analysis).


GTX60345 ICC/IF Image

ICC/IF analysis of 4% paraformaldehyde fixed HeLa cells using GTX60345 Histone H4 antibody - ChIP grade.

Green : Primary antibody

Blue : DAPI

Dilution : 1:1000



For full product information, images and publications, please visit our [website](https://www.genetex.com).