

# Histone H2B antibody - ChIP grade

**Cat. No. GTX60346**

<b>Host</b>	Rabbit
<b>Clonality</b>	Polyclonal
<b>Isotype</b>	IgG
<b>Applications</b>	WB, ICC/IF, ELISA, ChIP assay
<b>Reactivity</b>	Human

**Package**

50 µg

## Applications

### Application Note

\*Optimal dilutions/concentrations should be determined by the researcher.

Suggested dilution	Recommended dilution
WB	1:2,000 - 1/10,000
ICC/IF	1:1,000
ELISA	1:1,000 - 1/5,000
ChIP assay	1-5 µg

Not tested in other applications.

## Properties

<b>Form</b>	Liquid
<b>Buffer</b>	PBS
<b>Preservative</b>	0.05% Sodium azide
<b>Storage</b>	Store as concentrated solution. Centrifuge briefly prior to opening vial. For short-term storage (1-2 weeks), store at 4°C. For long-term storage, aliquot and store at -20°C or below. Avoid multiple freeze-thaw cycles.
<b>Concentration</b>	2.8 mg/ml (Please refer to the vial label for the specific concentration.)
<b>Immunogen</b>	KLH-conjugated synthetic peptide containing an unmodified sequence from the C-terminal part of the protein.
<b>Purification</b>	Purified by antigen-affinity chromatography
<b>Conjugation</b>	Unconjugated

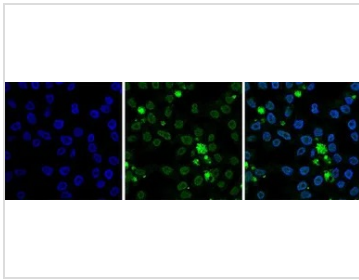
### Note

For laboratory research use only. Not for any clinical, therapeutic, or diagnostic use in humans or animals. Not for animal or human consumption.

Purchasers shall not, and agree not to enable third parties to, analyze, copy, reverse engineer or otherwise attempt to determine the structure or sequence of the product.



For full product information, images and publications, please visit our [website](#).

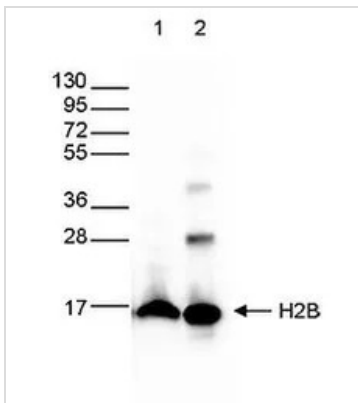
**DATA IMAGES**

**GTx60346 ICC/IF Image**

ICC/IF analysis of 4% paraformaldehyde fixed HeLa cells using GTx60346 Histone H2B antibody - ChIP grade.

Green : Primary antibody

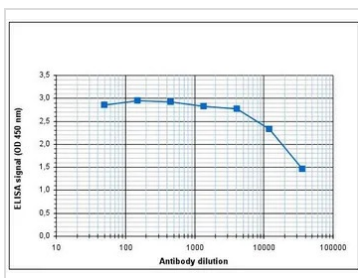
Blue : DAPI

Dilution : 1:1000

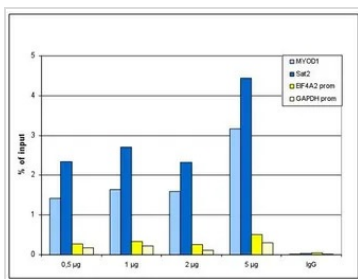

**GTx60346 WB Image**

WB analysis of whole cell extracts from HeLa cells (40 µg, lane 1) and on 1 µg of recombinant histone H2B (lane 2) using GTx60346 Histone H2B antibody - ChIP grade.

Dilution : 1:10,000


**GTx60346 ELISA Image**

ELISA analysis of peptides used for immunization using GTx60346 Histone H2B antibody - ChIP grade.


**GTx60346 ChIP assay Image**

ChIP analysis of sheared chromatin from  $10^6$  HeLa cells using GTx60346 Histone H2B antibody - ChIP grade. A titration of the antibody consisting of 0.5, 1, 2 and 5 µg per ChIP experiment was analysed. IgG (2 µg/IP) was used as negative IP control. QPCR was performed with primers for the promoters of the active GAPDH and EIF4A2 genes, used as negative controls and for the inactive MYOD1 gene and the Sat2 satellite repeat, used as positive controls. This figure shows the recovery, expressed as a % of input (the relative amount of immunoprecipitated DNA compared to input DNA after qPCR analysis).



For full product information, images and publications, please visit our [website](http://www.genetex.com).