

## Histone H2A antibody - ChIP grade

Cat. No. GTX60347

Host	Rabbit
Clonality	Polyclonal
Isotype	IgG
Applications	WB, ICC/IF, ELISA, ChIP assay
Reactivity	Human

## Package

50 µg

## Applications

## Application Note

\*Optimal dilutions/concentrations should be determined by the researcher.

Suggested dilution	Recommended dilution
WB	1:2,000
ICC/IF	1:500
ELISA	1:100-1:1,000
ChIP assay	1-2 µg

Not tested in other applications.

## Properties

Form	Liquid
Buffer	PBS
Preservative	0.05% Sodium azide, 0.05% ProClin 300
Storage	Store as concentrated solution. Centrifuge briefly prior to opening vial. For short-term storage (1-2 weeks), store at 4°C. For long-term storage, aliquot and store at -20°C or below. Avoid multiple freeze-thaw cycles.
Concentration	4 mg/ml (Please refer to the vial label for the specific concentration.)
Immunogen	KLH-conjugated synthetic peptide containing an unmodified sequence from the C-terminal part of the protein.
Purification	Purified by affinity chromatography
Conjugation	Unconjugated

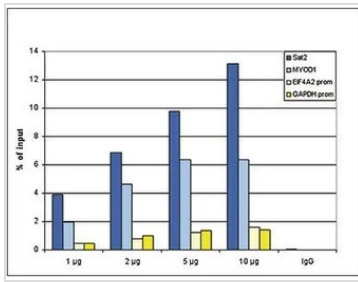
## Note

For laboratory research use only. Not for any clinical, therapeutic, or diagnostic use in humans or animals. Not for animal or human consumption.

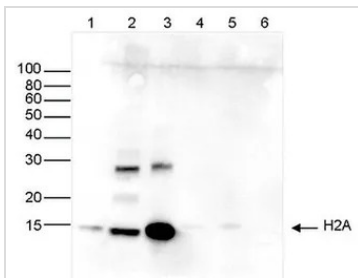
Purchasers shall not, and agree not to enable third parties to, analyze, copy, reverse engineer or otherwise attempt to determine the structure or sequence of the product.



For full product information, images and publications, please visit our [website](#).

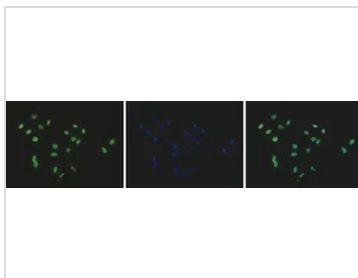
**DATA IMAGES**

**GTX60347 ChIP assay Image**

ChIP analysis of sheared chromatin from  $10^6$  HeLa cells using GTX60347 Histone H2A antibody - ChIP grade. A titration of the antibody consisting of 1, 2, 5, and 10 µg per ChIP experiment was analysed. IgG (5 µg/IP) was used as negative IP control. QPCR was performed with primers for the GAPDH and EIF4A2 promoters, used as negative controls and for the inactive MYOD1 gene and the Sat2 satellite repeat, used as positive controls. This figure shows the recovery, expressed as a % of input (the relative amount of immunoprecipitated DNA compared to input DNA after qPCR analysis).


**GTX60347 WB Image**

WB analysis of whole cell (25 µg, lane 1) and histone extracts (15 µg, lane 2) from HeLa cells, and on 1 µg of recombinant histone H2A, H2B, H3 and H4 (lane 3, 4, 5 and 6, respectively) using GTX60347 Histone H2A antibody - ChIP grade.

Dilution : 1:2,000

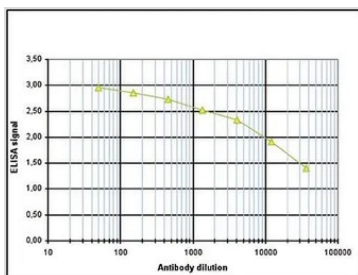

**GTX60347 ICC/IF Image**

ICC/IF analysis of 4% paraformaldehyde fixed HeLa cells using GTX60347 Histone H2A antibody - ChIP grade.

Green : Primary antibody

Blue : DAPI

Dilution : 1:500


**GTX60347 ELISA Image**

ELISA analysis of peptides used for immunization using GTX60347 Histone H2A antibody - ChIP grade.



For full product information, images and publications, please visit our [website](http://www.genetex.com).