

Histone H3 antibody - ChIP grade

Cat. No. GTX60349

Host	Rabbit
Clonality	Polyclonal
Isotype	IgG
Applications	WB, ELISA, ChIP assay
Reactivity	Human, Zebrafish

Package

50 µl

Applications

Application Note

*Optimal dilutions/concentrations should be determined by the researcher.

Suggested dilution	Recommended dilution
WB	1:500
ELISA	1:10,000
ChIP assay	1-5 µg

Not tested in other applications.

Properties

Form	Liquid
Buffer	Serum
Preservative	0.05% Sodium azide
Storage	Store as concentrated solution. Centrifuge briefly prior to opening vial. For short-term storage (1-2 weeks), store at 4°C. For long-term storage, aliquot and store at -20°C or below. Avoid multiple freeze-thaw cycles.
Immunogen	Two KLH-conjugated synthetic peptides containing an unmodified sequence from the central part and from the C-terminus of histone H3, respectively.
Purification	Unpurified
Conjugation	Unconjugated

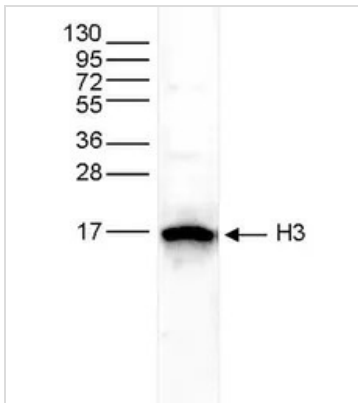
Note

For laboratory research use only. Not for any clinical, therapeutic, or diagnostic use in humans or animals. Not for animal or human consumption.

Purchasers shall not, and agree not to enable third parties to, analyze, copy, reverse engineer or otherwise attempt to determine the structure or sequence of the product.

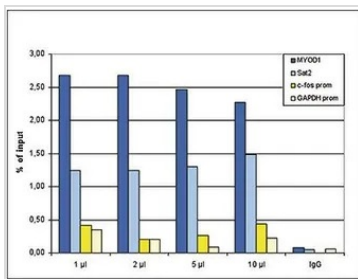


For full product information, images and publications, please visit our [website](#).

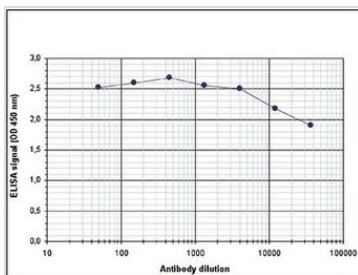
DATA IMAGES

GTX60349 WB Image

WB analysis of whole cell extracts from HeLa cells (25 µg) using GTX60349 Histone H3 antibody - ChIP grade.

Dilution : 1:500


GTX60349 ChIP assay Image

ChIP analysis of sheared chromatin from 10^6 HeLa cells using GTX60349 Histone H3 antibody - ChIP grade. A titration of the antibody consisting of 1, 2, 5, and 10 µl per ChIP experiment was analysed. IgG (2 µg/IP) was used as negative IP control. QPCR was performed with primers for the promoters of the active GAPDH and EIF4A2 genes, used as negative controls, and for the inactive MYOD1 and the Sat2 satellite repeat, used as positive controls. This figure shows the recovery, expressed as a % of input (the relative amount of immunoprecipitated DNA compared to input DNA after qPCR analysis).


GTX60349 ELISA Image

ELISA analysis of peptides used for immunization using GTX60349 Histone H3 antibody - ChIP grade.



For full product information, images and publications, please visit our [website](http://www.genetex.com).