

# Histone H3K27me2 (Di-methyl Lys27) antibody - ChIP grade

**Cat. No. GTX60351**

<b>Host</b>	Rabbit
<b>Clonality</b>	Polyclonal
<b>Isotype</b>	IgG
<b>Applications</b>	WB, ICC/IF, Dot, ELISA, ChIP assay
<b>Reactivity</b>	Human, Zebrafish

**Package**  
50 µg

## Applications

### Application Note

\*Optimal dilutions/concentrations should be determined by the researcher.

Suggested dilution	Recommended dilution
WB	Assay dependent
ICC/IF	Assay dependent
Dot	Assay dependent
ELISA	Assay dependent
ChIP assay	Assay dependent

Not tested in other applications.

## Properties

<b>Form</b>	Liquid
<b>Buffer</b>	PBS
<b>Preservative</b>	0.05% Sodium azide, 0.05% ProClin 300
<b>Storage</b>	Store as concentrated solution. Centrifuge briefly prior to opening vial. For short-term storage (1-2 weeks), store at 4°C. For long-term storage, aliquot and store at -20°C or below. Avoid multiple freeze-thaw cycles.
<b>Concentration</b>	2.63 mg/ml (Please refer to the vial label for the specific concentration.)
<b>Immunogen</b>	The histone H3, dimethylated at lysine 27 (H3K27me2), using a KLH-conjugated synthetic peptide.
<b>Purification</b>	Purified by affinity chromatography
<b>Conjugation</b>	Unconjugated

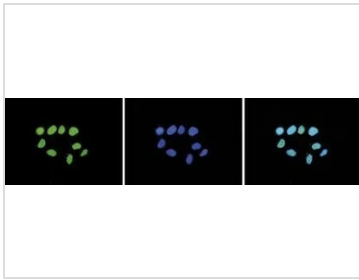
### Note

For laboratory research use only. Not for any clinical, therapeutic, or diagnostic use in humans or animals. Not for animal or human consumption.

Purchasers shall not, and agree not to enable third parties to, analyze, copy, reverse engineer or otherwise attempt to determine the structure or sequence of the product.



For full product information, images and publications, please visit our [website](#).

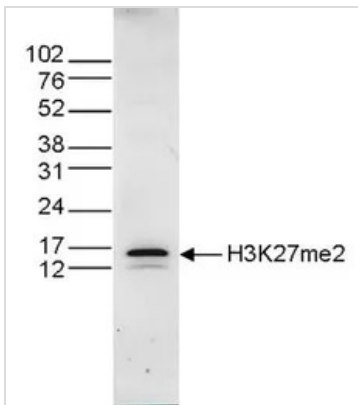
**DATA IMAGES**

**GTx60351 ICC/IF Image**

ICC/IF analysis of 4% paraformaldehyde fixed HeLa cells using GTx60351 Histone H3K27me2 (Di-methyl Lys27) antibody - ChIP grade.

Green : Primary antibody

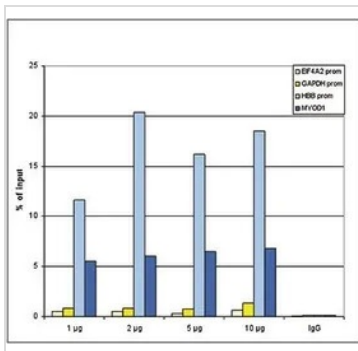
Blue : DAPI

Dilution : 1:500

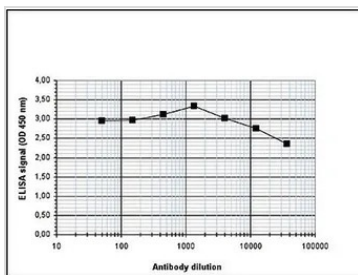

**GTx60351 WB Image**

WB analysis of histone extracts (15 µg) from HeLa cells using GTx60351 Histone H3K27me2 (Di-methyl Lys27) antibody - ChIP grade.

Dilution : 1:1,000


**GTx60351 ChIP assay Image**

ChIP analysis of sheared chromatin from  $10^6$  HeLa cells using GTx60351 Histone H3K27me2 (Di-methyl Lys27) antibody - ChIP grade. A titration of the antibody consisting of 1, 2, 5, and 10 µg per ChIP experiment was analysed. IgG (2 µg/IP) was used as negative IP control. QPCR was performed with primers for the promoter of the active GAPDH and EIF4A2 genes, used as negative controls, and for the promoter of the inactive HBB and the coding region of the inactive MYOD1 genes, used as positive controls. This figure shows the recovery, expressed as a % of input (the relative amount of immunoprecipitated DNA compared to input DNA after qPCR analysis). These results are in accordance with the observation that H3K27me2 is preferably present at silent genes.


**GTx60351 ELISA Image**

ELISA analysis of peptide containing the histone modification of interest using GTx60351 Histone H3K27me2 (Di-methyl Lys27) antibody - ChIP grade.



For full product information, images and publications, please visit our [website](http://www.genetex.com).