

Histone H3K9me1 (Mono-methyl Lys9) antibody - ChIP grade

Cat. No. GTX60352

Host	Rabbit
Clonality	Polyclonal
Isotype	IgG
Applications	WB, Dot, ELISA, ChIP assay
Reactivity	Human, Nematode

Package

50 µg

Applications

Application Note

*Optimal dilutions/concentrations should be determined by the researcher.

Suggested dilution	Recommended dilution
WB	1:1,000
Dot	1:20,000
ELISA	1:500 - 1:1,000
ChIP assay	1 µg

Not tested in other applications.

Properties

Form	Liquid
Buffer	PBS
Preservative	0.05% Sodium azide, 0.05% ProClin 300
Storage	Store as concentrated solution. Centrifuge briefly prior to opening vial. For short-term storage (1-2 weeks), store at 4°C. For long-term storage, aliquot and store at -20°C or below. Avoid multiple freeze-thaw cycles.
Concentration	1.17 mg/ml (Please refer to the vial label for the specific concentration.)
Immunogen	Histone H3 containing the monomethylated lysine 9 (H3K9me1), using a KLH-conjugated synthetic peptide.
Purification	Purified by affinity chromatography
Conjugation	Unconjugated

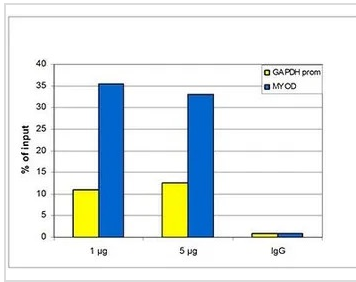
Note

For laboratory research use only. Not for any clinical, therapeutic, or diagnostic use in humans or animals. Not for animal or human consumption.

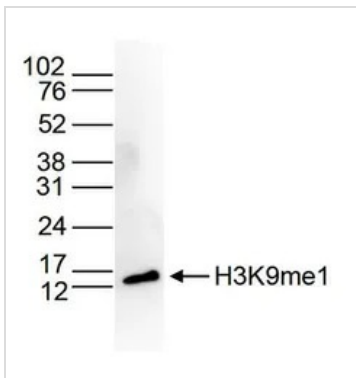
Purchasers shall not, and agree not to enable third parties to, analyze, copy, reverse engineer or otherwise attempt to determine the structure or sequence of the product.



For full product information, images and publications, please visit our [website](#).

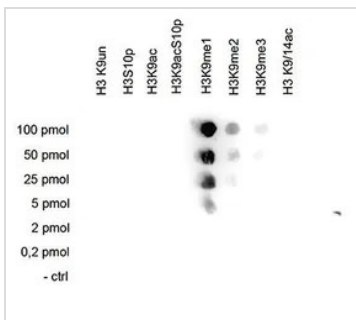
DATA IMAGES

GTX60352 ChIP assay Image

ChIP analysis of sheared chromatin from 10^4 HeLa cells using GTX60352 Histone H3K9me1 (Mono-methyl Lys9) antibody - ChIP grade. Respectively 1 and 5 µg of the antibody and 5 µg of IgG (negative IP control) were used per ChIP experiment. QPCR was performed with primers for the GAPDH promoter and for the inactive gene MYOD. This figure shows the recovery, expressed as a % of input (the relative amount of immunoprecipitated DNA compared to input DNA after qPCR analysis). These results are in accordance with the observation that H3K9me1 is preferably present at silent genes.


GTX60352 WB Image

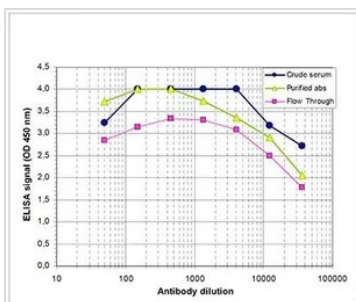
WB analysis of histone extracts (15 µg) from HeLa cells using GTX60352 Histone H3K9me1 (Mono-methyl Lys9) antibody - ChIP grade.

Dilution : 1:1,000


GTX60352 Dot Image

Dot blot analysis of 0.2 - 100 pmol of the peptides containing other modifications and the unmodified sequence of histone H3 using GTX60352 Histone H3K9me1 (Mono-methyl Lys9) antibody - ChIP grade.

Dilution : 1:20,000


GTX60352 ELISA Image

ELISA analysis of peptide containing the histone modification of interest using GTX60352 Histone H3K9me1 (Mono-methyl Lys9) antibody - ChIP grade.



For full product information, images and publications, please visit our [website](https://www.genetex.com).