

# Histone H3K79me1 (Mono-methyl Lys79) antibody - ChIP grade

**Cat. No. GTX60353**

<b>Host</b>	Rabbit
<b>Clonality</b>	Polyclonal
<b>Isotype</b>	IgG
<b>Applications</b>	WB, Dot, ELISA, ChIP assay
<b>Reactivity</b>	Human, Yeast

**Package**  
50 µg

## Applications

### Application Note

\*Optimal dilutions/concentrations should be determined by the researcher.

Suggested dilution	Recommended dilution
WB	1:200
Dot	1:20,000
ELISA	1:500
ChIP assay	1-2 µg

Not tested in other applications.

## Properties

<b>Form</b>	Liquid
<b>Buffer</b>	PBS
<b>Preservative</b>	0.05% Sodium azide, 0.05% ProClin 300
<b>Storage</b>	Store as concentrated solution. Centrifuge briefly prior to opening vial. For short-term storage (1-2 weeks), store at 4°C. For long-term storage, aliquot and store at -20°C or below. Avoid multiple freeze-thaw cycles.
<b>Concentration</b>	1.66 mg/ml (Please refer to the vial label for the specific concentration.)
<b>Immunogen</b>	Histone H3 containing the monomethylated lysine 79 (H3K79me1), using a KLH-conjugated synthetic peptide.
<b>Purification</b>	Purified by affinity chromatography
<b>Conjugation</b>	Unconjugated

### Note

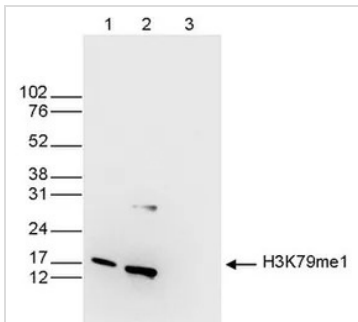
For laboratory research use only. Not for any clinical, therapeutic, or diagnostic use in humans or animals. Not for animal or human consumption.

Purchasers shall not, and agree not to enable third parties to, analyze, copy, reverse engineer or otherwise attempt to determine the structure or sequence of the product.



For full product information, images and publications, please visit our [website](#).

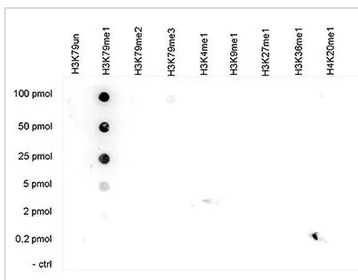
DATA IMAGES



**GTx60353 WB Image**

WB analysis of whole cell (25 µg, lane 1) and histone extracts (15 µg, lane 2) from HeLa cells, and on 1 µg of recombinant histone H3 (lane 3) using GTx60353 Histone H3K79me1 (Mono-methyl Lys79) antibody - ChIP grade.

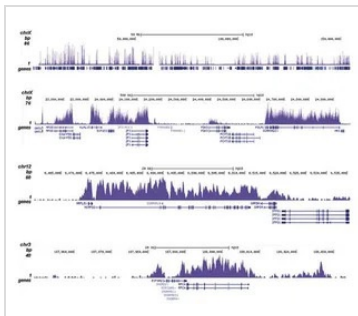
Dilution : 1:200



**GTx60353 Dot Image**

Dot blot analysis of 0.2 - 100 pmol of the peptides containing other histone modifications and the unmodified H3K79 using GTx60353 Histone H3K79me1 (Mono-methyl Lys79) antibody - ChIP grade.

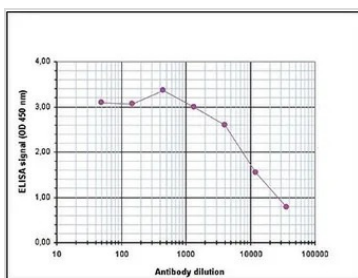
Dilution : 1:20,000



**GTx60353 ChIP assay Image**

ChIP analysis of HeLa cells using GTx60353 Histone H3K79me1 (Mono-methyl Lys79) antibody - ChIP grade. The IP'd DNA was subsequently analysed on an Illumina Genome Analyzer. Library preparation, cluster generation and sequencing were performed according to the manufacturer's instructions. The 36 bp tags were aligned to the human genome using the ELAND algorithm. Figure 2 shows the peak distribution along the complete sequence and a 1 Mb region of the X-chromosome (figure 2A and B), in 100 kb regions surrounding the GAPDH positive control and EIF4A2 genes (figure 2C and D).

Antibody amount : 1µg



**GTx60353 ELISA Image**

ELISA analysis of peptide containing the histone modification of interest using GTx60353 Histone H3K79me1 (Mono-methyl Lys79) antibody - ChIP grade.



For full product information, images and publications, please visit our [website](http://www.genetex.com).